



Programming reference guide
CIFX API

Hilscher Gesellschaft für Systemautomation mbH

www.hilscher.com

DOC121201PR09EN | Revision 9 | English | 2020-05 | Released | Public

Table of contents

1	Introduction.....	4
1.1	About this document	4
1.2	List of revisions.....	4
1.3	Terms, abbreviations and definitions	5
1.4	References to documents	5
2	Application note	6
2.1	Component overview for host applications	6
2.2	Component overview for netX applications.....	7
2.3	Availability of API functions	8
3	API basics	11
3.1	DPM layout, devices and channels	12
3.2	Basic fieldbus data handling	13
3.3	Fieldbus-specific information and functions	13
4	CIFX API (Application Programming Interface).....	14
4.1	API header files	14
4.2	Driver functions	14
4.3	System Device functions.....	15
4.4	Communication Channel functions	16
4.5	Structure definitions	18
4.5.1	Driver information	18
4.5.2	Board information	18
4.5.3	System channel information	19
4.5.4	Communication channel information	21
4.6	Driver-related functions	22
4.6.1	xDriverOpen	22
4.6.2	xDriverClose.....	23
4.6.3	xDriverGetInformation	24
4.6.4	xDriverGetErrorDescription	25
4.6.5	xDriverEnumBoards	26
4.6.6	xDriverEnumChannels.....	27
4.6.7	xDriverRestartDevice.....	28
4.6.8	xDriverMemoryPointer.....	29
4.7	System Device-specific functions.....	31
4.7.1	xCsysdeviceOpen	31
4.7.2	xCsysdeviceClose	32
4.7.3	xCsysdeviceInfo	33
4.7.4	xCsysdeviceReset.....	34
4.7.5	xCsysdeviceResetEx.....	35
4.7.6	xCsysdeviceBootstart.....	37
4.7.7	xCsysdeviceGetMBXState	38
4.7.8	xCsysdevicePutPacket.....	39
4.7.9	xCsysdeviceGetPacket.....	40
4.7.10	xCsysdeviceDownload	41
4.7.11	xCsysdeviceFindFirstFile.....	43
4.7.12	xCsysdeviceFindNextFile	44
4.7.13	xCsysdeviceUpload.....	45
4.7.14	xCsysdeviceExtendedMemory	46
4.8	Channel-specific functions	50
4.8.1	xChannelOpen	50
4.8.2	xChannelClose	51
4.8.3	xChannelDownload	52
4.8.4	xChannelFindFirstFile.....	53
4.8.5	xChannelFindNextFile	54
4.8.6	xChannelUpload.....	55
4.8.7	xChannelGetMBXState	56
4.8.8	xChannelPutPacket.....	57
4.8.9	xChannelGetPacket.....	58
4.8.10	xChannelGetSendPacket	59
4.8.11	xChannelReset.....	60
4.8.12	xChannelInfo	61

4.8.13	xChannelIOInfo	62
4.8.14	xChannelWatchdog	63
4.8.15	xChannelConfigLock	64
4.8.16	xChannelHostState.....	65
4.8.17	xChannelBusState.....	66
4.8.18	xChannelControlBlock.....	67
4.8.19	xChannelCommonStatusBlock.....	68
4.8.20	xChannelExtendedStatusBlock	69
4.8.21	xChannelUserBlock.....	70
4.8.22	xChannelIORead.....	71
4.8.23	xChannelIOWrite.....	72
4.8.24	xChannelIOReadSendData	73
4.8.25	PLC I/O image functions.....	74
4.8.26	DMA functions	83
4.8.27	Notification functions	84
4.8.28	Fieldbus synchronization handling	93
5	Simple C-application example	96
5.1	The Main() function	96
5.2	System device example	97
5.3	Communication channel example	99
5.4	Board and channel enumeration	103
6	General protocol stack handling	104
6.1	Overview	104
6.2	Protocol stack configuration	107
6.3	Cyclic data exchange	109
7	Error codes	110
8	Appendix	116
8.1	List of tables	116
8.2	List of figures	117
8.3	Legal notes.....	118
8.4	Contacts	122

1 Introduction

1.1 About this document

This manual describes the *CIFX/COMX/netX Application Programming Interface (CIFX API)* and the containing functions, offered for all Hilscher standard devices based on netX controller hardware.

Aim of the API is to provide applications a target and fieldbus independent programming interface to netX based hardware running a standard Hilscher fieldbus protocol or firmware which meet the Hilscher netX dual port memory (netX DPM) definitions, described in the '*netX Dual Port Memory Interface*' manual (see reference [1]).

The API is designed to give the user easy access to all of the communication board functionalities.

In addition, Hilscher also offers a free of charge *cifX Toolkit* (C-source code based) which allows to write own drivers based on the Hilscher netX DPM definitions including the *CIFX API* functions (the toolkit is described in a separate *cifX/netX Toolkit* manual, see reference [2]).

1.2 List of revisions

Rev	Date	Name	Chapter	Revision
5	2018-08-28	RMA	2.3 4.7.10 4.8.22 4.8.23	Section <i>Availability of API functions</i> : List of API functions updated. Section <i>xSysdeviceDownload</i> : Table of available download modes added. Section <i>xChannelIORead</i> : Note added. Section <i>xChannelIOWrite</i> : Note added.
6	2019-04-16	ALM / LCO	2.3 4.3 4.5.3 4.7.5	Section <i>Availability of API functions</i> : xSysdeviceResetEx added. Section <i>System Device functions</i> : xSysdeviceResetEx added. System Control Block updated. Section <i>xSysdeviceResetEx</i> added.
7	2019-08-13		4.7.5	Section <i>xSysdeviceResetEx</i> : Description of update start expanded.
8	2019-12-02	ALM / LCO	4.7.5 4.8.18 4.8.19	Section <i>xSysdeviceResetEx</i> : Updated description of remanet data deletion Section <i>xChannelControlBlock</i> : Update concening use of offset parameter for big-endian targets. Section <i>xChannelCommonStatusBlock</i> : Update concening use of offset parameter for big-endian targets.
9	2020-05-28	LCO	4.6, 4.7.3-4.7.6, 4.7.10, 4.8.27.4, 4.8.27.6 4.8.27.4 - 4.8.27.6 7	Function call syntax fixed. Spelling of notifications fixed. Section <i>Error codes</i> updated.

Table 1: List of revisions

1.3 Terms, abbreviations and definitions

Term	Description
netX	Hilscher highly integrated network controller
rcX	Hilscher R eal Time C ommunication System for net X
cifX	C ommunication I nterface based on netX
comX	C ommunication M odule based on netX
API	A pplication P rogramming I nterface
DPM	D ual- P ort M emory Physical memory area, connected to a host processor. Standard interface to Hilscher communication boards like CIFX/COMX or netX evaluation boards (Attention: DPM may also be used as a shortcut for PROFIBUS- DP Master field bus protocol).
SHM	S hared M emory System memory area shared between different processes inside a software application
SPI	S erial P eripheral I nterface
RPC	R emote P rocedure C alls
DPM Manual	Description of the standard Hilscher DPM layout and functionality
netX Transport	Diagnostics and remote access functions to netX based remote devices via serial interfaces
CIFX Toolkit	C source-code based implementation of the standard Hilscher DPM access functions
SDO	S ervice D ata O bject
PDO	P rocess D ata O bject

Table 2: Terms, abbreviations and definitions

1.4 References to documents

This document refers to the following documents:

- [1] Hilscher Gesellschaft für Systemautomation mbH: DPM Manual, netX Dual-Port Memory Interface DPM Manual, Revision 17, English, 2020.
Description of the standard Hilscher DPM layout and functionality
- [2] Hilscher Gesellschaft für Systemautomation mbH: Toolkit Manual, cifX/netX Toolkit - DPM, Revision 11, English, 2019.
C source-code based implementation of the standard Hilscher DPM access functions
- [3] Hilscher Gesellschaft für Systemautomation mbH: Program Reference Guide, netX Diagnostic and Remote Access, Fundamentals Revision 3, English, 2019.

Hilscher Gesellschaft für Systemautomation mbH: Program Reference Guide, netX Diagnostic and Remote Access, Host Device Revision 3, English, 2013.

Hilscher Gesellschaft für Systemautomation mbH: Program Reference Guide, netX Diagnostic and Remote Access, Target Device Revision 3, English, 2010.

Table 3: References to documents

2 Application note

2.1 Component overview for host applications

Hilscher offers the *CIFX API* on different platforms and as different applications (DLL / library or C source code). Usually the API comes with an operating system driver or with the CIFX Toolkit.

The use of the API also implies the physical hardware connection to the netX hardware. While a device driver uses memory functions to access the DPM, the toolkit also allows the implementation of alternative hardware access functions like *DPM via SPI* or custom access functions like *DPM via a custom USB protocol*.

The *netX Transport DLL* is a special implementation of the *CIFX API*, including hardware access via serial interfaces (e. g. USB, serial or Ethernet connections). This component is able to convert *CIFX API* function calls either into appropriate packet based commands (rcX packets, described in reference [1]) or into a dedicated binary format which enables the execution of the API functions on a remote system (similar to RPC - remote procedure calls).

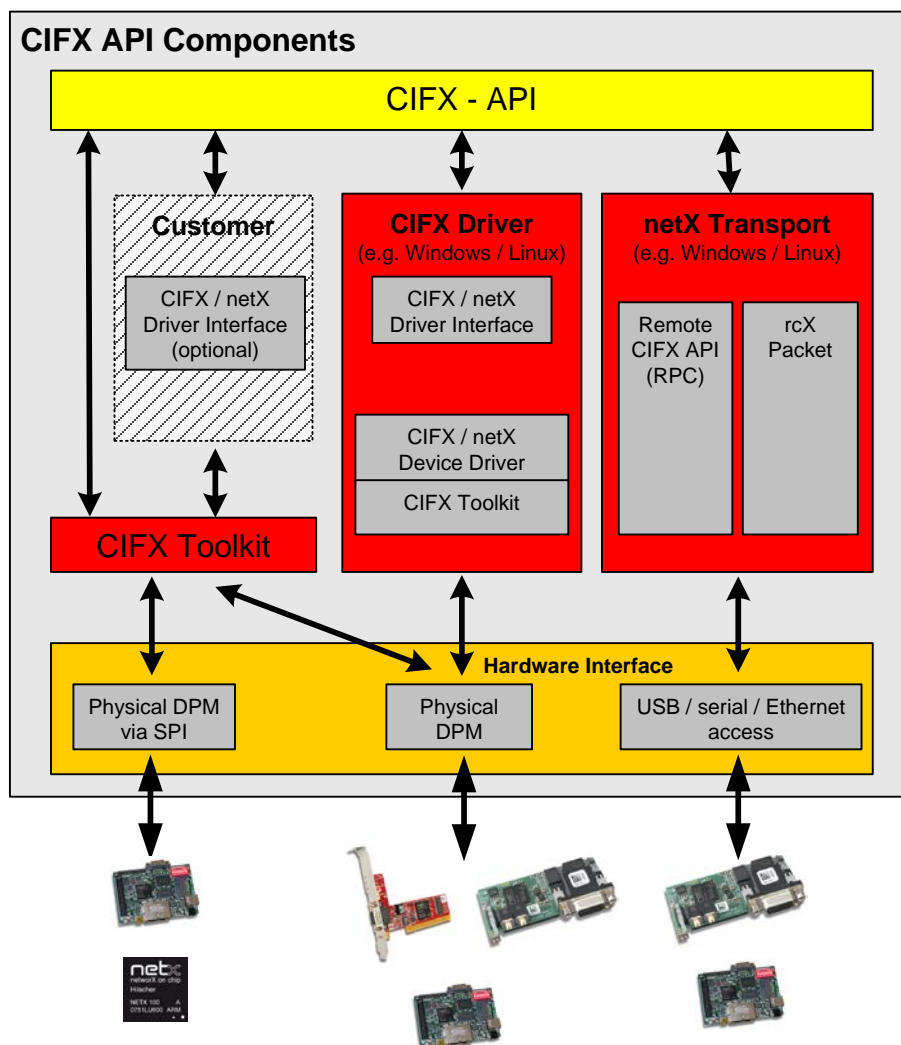


Figure 1: CIFX API components

Note: Not all of the physical connections can be made available on every host system (e.g. SPI on Windows).

- **Physical DPM interface**
The DPM hardware interface, with direct access to the memory, offers the entire defined API functions.
- **Physical DPM via SPI**
The netX hardware offers a SPI interface accepting encoded memory access functions (memory read / write functions) to the DPM. These SPI commands are decoded by the hardware / firmware and executed on the internal DPM of the netX device.
- **USB / serial / Ethernet access**
Another possibility to access a netX device is the use of serial interfaces (USB/serial/Ethernet). In this case, *CIFX API* function calls are converted (described in the *netX Diagnostic and Remote Access* manual, see reference [3]), transferred and processed by the remote netX device.
This type of communication does not offer all of the *CIFX API* functions. Especially functions related to mapped memory areas like *xChannelPLC...()* functions.

2.2 Component overview for netX applications

Hilscher also provides the application development directly on the netX communication controller. The *CIFX API* is also available in this environment.

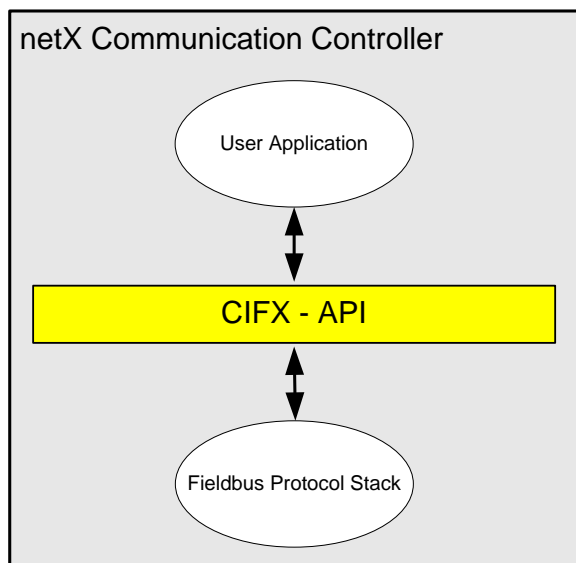


Figure 2: Component Overview for netX applications

2.3 Availability of API functions

Following table lists the available API functions regarding to the used environment and the physical hardware connection.

Driver functions

Function	Brief description	DPM	DPM via SPI	USB / serial / Ethernet	netX
				RPC Packet	
xDriverOpen	Opens the driver	X	X	X X	X
xDriverClose	Closes the driver	X	X	X X	X
xDriverGetInformation	Retrieves driver information	X	X	X X	X
xDriverGetErrorDescription	Retrieves an error code description	X	X	X X	X
xDriverEnumBoards	Enumerates available boards/devices	X	X	X X	X
xDriverEnumChannels	Enumerates available channels on a specific board	X	X	X X	X
xDriverRestartDevice	Restarts a device	X	X	O O	O
xDriverMemoryPointer	Gets/Releases a pointer to the dual port memory. Only to be used for debugging purpose.	X	O	O O	X

Table 4: List of API functions – Driver functions

System Device functions

Function	Brief description	DPM	DPM via SPI	USB / serial / Ethernet	netX
				RPC Packet	
xCysdeviceOpen	Opens a connection a system device	X	X	X X	X
xCysdeviceClose	Closes a connection to a system device	X	X	X X	X
xCysdeviceInfo	Gets System device information	X	X	X X	X
xCysdeviceReset	Performs a device reset	X	X	X X	X
xCysdeviceResetEx	Performs a device reset with parameters	X	X	X X	X
xCysdeviceBootstart	Performs a device boot start	X	X	O O	O
xCysdeviceGetMBXState	Retrieves the system mailbox state	X	X	X X	X
xCysdeviceGetPacket	Reads a pending packet	X	X	X X	X
xCysdevicePutPacket	Sends a packet	X	X	X X	X
xCysdeviceDownload	Downloads a file/configuration/firmware	X	X	X X	X
xCysdeviceFindFirstFile	Finds the first file in the given directory	X	X	X X	X
xCysdeviceFindNextFile	Finds the next file entry in the given directory	X	X	X X	X
xCysdeviceUpload	Uploads a file/configuration/firmware	X	X	X X	X
xCysdeviceExtendedMemory	Gets a pointer to the extended memory area	X (1)	O	O O	O

Table 5: List of API functions – System Device functions

Communication Channel functions

Function	Brief description	DPM	DPM via SPI	USB / serial / Ethernet	netX
				RPC Packet	
xChannelOpen	Opens a communication channel	X	X	X X	X
xChannelClose	Closes a communication channel	X	X	X X	X
Asynchronous services (Packets)					X
xChannelGetMBXState	Retrieves the channels mailbox state	X	X	X X	X
xChannelGetPacket	Reads packet from the channel mailbox	X	X	X X	X
xChannelPutPacket	Sends a packet to the channel mailbox	X	X	X X	X
xChannelGetSendPacket	Reads back the packet sent	X	X	X O	X
Device Administrational/Informational functions					X
xChannelDownload	Downloads a file/configuration to the channel	X	X	X X	X
xChannelReset	Resets the channel	X	X	X X	X (3)
xChannelInfo	Retrieves channel specific information	X	X	X O	X
xChannelWatchdog	Activates/Deactivates/Trigger Watchdog	X	X	X O	X
xChannelHostState	Sets the Application state flag (signal application is running or not)	X	X	X O	X
xChannelBusState	Sets the bus state flag (start or stop fieldbus communication)	X	X	X X	X
xChannelControlBlock	Access the Channels control block	X	X	X X	X
xChannelCommonStatusBlock	Access to the common status block	X	X	X X	X
xChannelExtendedStatusBlock	Access to the extended status block	X	X	X X	X
xChannelUserBlock	Access user block (not implemented yet!)	X	X	X X	X
Cyclic Data services (I/O's)					
xChannelIORead	Instructs the device to place the latest data into the DPM and passes them to the user	X	X	X O	X
xChannelIOWrite	Copies the data to the DPM and waits for the firmware to retrieve them	X	X	X O	X
xChannelIOReadSendData	Reads back the last send data	X	X	X O	X
Cyclic Data services (I/O's, PLC optimized)					
xChannelPLCMemoryPtr	Gets a pointer to the IO Block	X	O (2)	O O	X
xChannelPLCActivateRead	Instruct the firmware to place the latest input data into the dual port (no wait for completion)	X	O (2)	O O	X
xChannelPLCActivateWrite	Instruct the firmware to retrieve the latest output data from the dual port (no wait for completion)	X	O (2)	O O	X
xChannelPLCIsReadReady	Checks if the last Read Activation has finished	X	O (2)	O O	X
xChannelPLCIsWriteReady	Checks if the last Write Activation has finished	X	O (2)	O O	X

Function	Brief description	DPM	DPM via SPI	USB / serial / Ethernet	netX
				RPC Packet	
DMA services					
xChannelDMAState	Activates/Deactivates DMA mode	X (1)	O	O O	O
Bus synchronous operation					
xChannelSyncState	Waits for a synchronization event or trigger/acknowledge a sync event	X	X (4)	O O	O
Notification services (only available in Interrupt mode)					
xChannelRegisterNotification	Registers a notification callback	X	X (4)	O O	O
xChannelUnregisterNotification	Un-register a notification callback	X	X (4)	O O	O

Table 6: List of API functions – Communication Channel functions

Notes:

- (1) PCI / PCIe hardware only.
- (2) Special implementation for SPI necessary.
- (3) A system reset will reset the whole device.
- (4) Notifications are only available in interrupt mode.

3 API basics

As described before, the *CIFX API* is the common, fieldbus protocol independent, function interface to Hilscher CIFX/COMX and netX based devices.

It is based on the Hilscher netX DPM (dual-port memory) definition and abstracts the access to the netX based hardware and the Hilscher netX protocol firmware running on the netX.

The API offers a set of functions grouped into '*Driver*' related, '*System Device*' related and '*Communication Channel*' related functions.

Each of the group covers device specific functions by providing a set of API functions necessary for the specific handling.

Functional Groups in the CIFX-API

- *Driver*-related functions
Administration of multiple devices in a standardized way
- *System Device*-related functions
General device functions (e.g. system reset, download, device information)
- *Communication Channel*-related functions
Fieldbus protocol stack handling

3.1 DPM layout, devices and channels

The DPM layout divides the interface to a netX device into several areas (channels) where each channel has its own structure, predefined information and functionality and can be handled independently from other channels.

A standard netX firmware offers up to 8 channels with three different channel definitions.

General dual-port memory layout

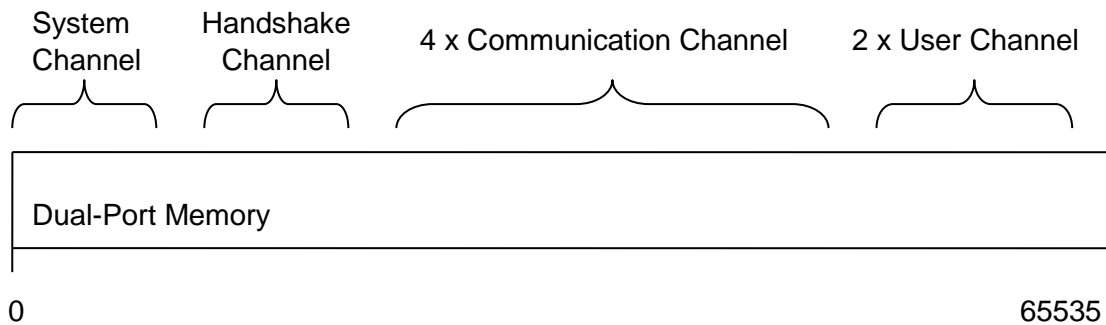


Figure 3: General dual-port memory layout

Channel definition

- **System Channel** (also named *System Device*)
The main channel is the '*System Channel*' also named '*System Device*'. It is always available and used for administration functions belonging to the whole device, like hardware reset, firmware download etc.
- **Communication Channels**
Communication channels representing a fieldbus connection (a fieldbus protocol stack) with its information and functionalities.
Up to four communication channels are possible.
- **User Channels**
User channels are the third type of channels and designed for user applications, running on the netX chip in parallel to fieldbus protocol stack (two user channels are possible).

The *Handshake Channel* is necessary for special device functionalities like interrupt handling and DPM access synchronization and therefore it has no user API functions offering access to this channel.

CIFX API function names correspond to the function groups and channel definitions.

- **xSysdevice.....()** Functions and functionalities corresponding to the system channel functionalities
- **xChannel.....()** Functions and functionalities corresponding communication channel and its needs
- **xDriver.....()** Functions to handle multiple devices in a common way

3.2 Basic fieldbus data handling

NetX devices are providing two basic mechanisms to transfer user data between a fieldbus protocol stack and user applications.

First one is the cyclic process data transfer mechanism (*Transfer of the Process Data Image*) and the second one is the asynchronous data transfer mechanism (*Packet Oriented Data Transfer*). Other information like configuration, diagnostic and device specific administration functions are also based on the asynchronous data transfer mechanism.

- **Asynchronous Data Transfer (Packet Oriented Data Transfer)**

Data are transferred by using a data structure named rcX packet. Packet transfer between a host system and the cifX hardware takes place via a, so called, mailbox system. This method is used to transfer of SDO, administration, configuration and diagnostic data.

- **Cyclic Process Data Transfer (Process Data Image Transfer)**

Data are located in a process data image. This method is used for I/O based protocols (PDO transfer).

Input and output data are located in separate memory areas which can be handled independently.

Note: A complete description of the fieldbus data handling can be found in the *netX Dual Port Memory Interface* manual

3.3 Fieldbus-specific information and functions

Beside the general device data in the DPM each fieldbus protocol stack comes with its own specific data and functions. This specific information can be found in the corresponding protocol API manuals.

Note: Fieldbus specific information and functionalities can be found in the corresponding protocol API manuals (e. g. *PROFIBUS DP Master Protocol API 15 EN.pdf*).

4 CIFX API (Application Programming Interface)

The API offers functions grouped into 'Driver', 'System Channel' and 'Communication Channel' related functions.

4.1 API header files

The API comes with a single C header file.

API definition file: *cifXUser.h*

Error definitions: *cifXError.h*

4.2 Driver functions

The driver related functions are used to handle a driver and offers functions to identify the connected hardware.

Function	Description
xDriverOpen	Opens the driver, allowing access to every driver function
xDriverClose	Closes an open connection to the driver
xDriverGetInformation	Retrieves driver information (e.g. Version)
xDriverGetErrorDescription	Retrieves an English description of a cifX driver error code
xDriverEnumBoards	Enumerate through all boards/devices the driver is managing
xDriverEnumChannels	Enumerate through all channels located on a specific board
xDriverRestartDevice	Restart a device
xDriverMemoryPointer	Get/Release a pointer to the dual port memory. This function must only be used for debugging purpose!

Table 7: Driver functions

4.3 System Device functions

Each communication board owns a *System Device* allowing generic access to the device. This '*System Device*' only offers a small mailbox and system global status information and should not be used to communicate with a protocol stack directly.

Function	Description
xSysdeviceOpen	Opens a connection to a boards system device
xSysdeviceClose	Closes a connection to a system device
xSysdeviceInfo	Gets System device specific information (e.g. mailbox size)
xSysdeviceReset	Performs a device reset
xSysdeviceResetEx	Performs a device reset with parameters
xSysdeviceBootstart	<p>Performs a device boot start.</p> <p>netX 10/50/51/52/100/500: This will activate the Second Stage Boot Loader. The Second Stage Boot Loader does not start the firmware.</p> <p>netX 90/4000/4100: This will activate the Maintenance Firmware.</p> <p>Note: Only possible on Flash-based devices.</p>
xSysdeviceGetMBXState	Retrieves the system mailbox state
xSysdeviceGetPacket	Retrieves a pending packet from the system mailbox
xSysdevicePutPacket	Sends a packet to the system mailbox
xSysdeviceDownload	Downloads a file/configuration/firmware to the device
xSysdeviceFindFirstFile	Finds the first file entry in the given directory
xSysdeviceFindNextFile	Finds the next file entry in the given directory
xSysdeviceUpload	Uploads a file/configuration/firmware from the device
xSysdeviceExtendedMemory	Gets a pointer to an available extended memory area

Table 8: System Device functions

4.4 Communication Channel functions

Each protocol stack is represented as a *Communication Channel*.

Communication channels owning a set of functions, allowing every possible interaction with the protocol stack.

The *CIFX API* functions are protocol stack independent and used for all available Hilscher netX based protocol stacks. Only the data content is protocol specific and must be interpreted by the user application.

Communication Channel functions

Function	Description
xChannelOpen	Opens a connection to a communication channel
xChannelClose	Closes a connection
Asynchronous services (Packets)	
xChannelGetMBXState	Retrieve the channels mailbox state
xChannelGetPacket	Retrieve a pending packet from the channel mailbox
xChannelPutPacket	Send a packet to the channel mailbox
xChannelGetSendPacket	Read back the last sent packet
Device Administrational/Informational functions	
xChannelDownload	Download a file/configuration to the channel
xChannelReset	Reset the channel
xChannelInfo	Retrieve channel specific information
xChannelWatchdog	Activate/Deactivate/Trigger the channel Watchdog
xChannelHostState	Set the application state flag in the application COS flags, to signal the hardware if an application is running or not
xChannelBusState	Set the bus state flag in the application COS state flags, to start or stop fieldbus communication.
xChannelControlBlock	Access the channel control block
xChannelCommonStatusBlock	Access to the common status block
xChannelExtendedStatusBlock	Access to the extended status block
xChannelUserBlock	Access user block (not implemented yet!)
Cyclic Data services (I/O's)	
xChannelIORead	Instructs the device to place the latest data into the DPM and passes them to the user
xChannelIOWrite	Copies the data to the DPM and waits for the firmware to retrieve them
xChannelIOReadSendData	Reads back the last send data
Cyclic Data services (I/O's, PLC optimized)	
xChannelPLCMemoryPtr	Get a pointer to the I/O memory block
xChannelPLCActivateRead	Instruct the firmware to place the latest input data into the I/O memory block (no wait for completion)
xChannelPLCActivateWrite	Instruct the firmware to retrieve the latest output data from the I/O memory block (no wait for completion)
xChannelPLCIsReadReady	Checks if the last read activation has finished
xChannelPLCIsWriteReady	Checks if the last write activation has finished

Function	Description
DMA services	
xChannelDMAState	Activate/Deactivate DMA mode
Bus synchronous operation	
xChannelSyncState	Wait for synchronization events or trigger / acknowledge a sync event
Notification services (only available in Interrupt mode)	
xChannelRegisterNotification	Register a notification callback
xChannelUnregisterNotification	Un-register a notification callback

Table 9: Communication Channel functions

4.5 Structure definitions

Note: All structures are byte packed, for easy portability and data exchange via the DPM.

4.5.1 Driver information

When querying the driver information the following structure is expected in the function call.

Element	Type	Description
abDriverVersion	uint8_t[32]	Human readable driver name and version
ulBoardCnt	uint32_t	Number of handled boards

Table 10: Driver information structure (DRIVER_INFORMATION)

4.5.2 Board information

The board information structure is used, when enumerating boards.

Element	Type	Description
lBoardError	uint32_t	Global board error (currently not used always 0)
abBoardName	uint8_t[16]	This is the name of the board which can be used for opening a channel or the system device on it.
abBoardAlias	uint8_t[16]	This is an alternate, user-definable name for the device
ulBoardID	uint32_t	Unique driver created board identifier
ulSystemError	uint32_t	Boot-up/System error, when trying to handle device
ulPhysicalAddress	uint32_t	Physical address of the device's DPM
ulIrqNumber	uint32_t	Interrupt number assigned to the device
blIrqEnabled	uint32_t	Defines if the interrupt is used by the driver, or if the driver works in polling mode for this device
ulChannelCnt	uint32_t	Number of available channels
ulDpmTotalSize	uint32_t	Total size of the dual port in bytes
tSystemInfo	SYSTEM_CHANNEL_SYSTEM_INFO_BLOCK (see below)	

Table 11: Board information structure (BOARD_INFORMATION)

4.5.3 System channel information

The following structures are returned on calls to `xSysdeviceInfo()` depending on the passed command parameter:

Command: CIFX_INFO_CMD_SYSTEM_INFORMATION

Element	Type	Description
ulSystemError	uint32_t	Boot-up/System error, when trying to handle device
ulDpmTotalSize	uint32_t	Total size of the dual port in bytes
ulMBXSize	uint32_t	Size of the system mailbox in bytes
ulDeviceNumber	uint32_t	Device number (as found on the matrix label)
ulSerialNumber	uint32_t	Serial number (as found on the matrix label)
ulOpenCnt	uint32_t	Number of times this device is open

Table 12: System channel information (SYSTEM_CHANNEL_SYSTEM_INFORMATION)

Command: CIFX_INFO_CMD_SYSTEM_INFO_BLOCK

Element	Type	Description
abCookie	uint8_t[4]	System channel identifier MUST be "netX"
ulDpmTotalSize	uint32_t	Total size of the dual port in bytes
ulDeviceNumber	uint32_t	Device number (as found on the matrix label)
ulSerialNumber	uint32_t	Serial number (as found on the matrix label)
ausHwOptions	uint16_t[4]	Array of hardware options for all four possible ports of the netX
usManufacturer	uint16_t	Manufacturer ID
usProductionDate	uint16_t	Production date code
ulLicenseFlags1	uint32_t	Hilscher dedicated license flags (e.g. fieldbus license)
ulLicenseFlags2	uint32_t	Hilscher dedicated license flags (e.g. additional information)
usNetxLicenseID	uint16_t	Special netX user license information
usNetxLicenseFlags	uint16_t	Dedicated netX user license information
usDeviceClass	uint16_t	Hardware device class (e.g. CIFX / COMX etc.)
bHwRevision	uint8_t	Hardware revision
bHwCompatibility	uint8_t	Hardware compatibility list
bDevIdNumber	uint8_t	Device identification number (rotary switch)
bReserved	uint8_t	unused/reserved
usReserved	uint16_t	unused/reserved

Table 13: System channel info block (SYSTEM_CHANNEL_SYSTEM_INFO_BLOCK)

Command: CIFX_INFO_CMD_SYSTEM_CHANNEL_BLOCK

Element	Type	Description
abInfoBlock	uint8_t[8][16]	Channel information in the system channel

Table 14: System Channel - Channel Info Block (SYSTEM_CHANNEL_CHANNEL_INFO_BLOCK)

Area definitions in cifXUser.h

CIFX_MAX_NUMBER_OF_CHANNEL_DEFINITION = 8

CIFX_SYSTEM_CHANNEL_DEFAULT_INFO_BLOCK_SIZE = 16

Note: To evaluate the content of the *abInfoBlock* array, refer to the netX DPM Interface Manual and the rcX_User.h, structure NETX_CHANNEL_INFO_BLOCK.

Command: CIFX_INFO_CMD_SYSTEM_CONTROL_BLOCK

Element	Type	Description
ulSystemCommandCOS	uint32_t	System channel host COS flags
ulSystemControl	uint32_t	netX 10/50/51/52/100/500: Reserved, not used.
		netX 90/4000/4100: System channel control.

Table 15: System channel control block (SYSTEM_CHANNEL_SYSTEM_CONTROL_BLOCK)

Command: CIFX_INFO_CMD_SYSTEM_STATUS_BLOCK

Element	Type	Description
ulSystemCOS	uint32_t	System channel device COS flags
ulSystemStatus	uint32_t	Actual system state
ulSystemError	uint32_t	Actual system error
ulBootError	uint32_t	Error code from the second stage boot loader (only valid if Cookie="BOOT")
ulTimeSinceStart	uint32_t	Time since system start in seconds
usCpuLoad	uint16_t	CPU load in 0,01% units (10000 => 100%)
usReserved	uint16_t	Reserved for later use
ulHWFeatures	Uint32_t	Information about hardware features (e.g. MRAM / RTC)
abReserved	uint8_t[36]	unused/reserved

Table 16: System channel status block (SYSTEM_CHANNEL_SYSTEM_STATUS_BLOCK)

4.5.4 Communication channel information

The following structure is returned on calls to *xChannelInfo()* or when enumerating channels on a Board using *xDriverEnumChannels()*:

Element	Type	Description
abBoardName	uint8_t[16]	This is the name of the board which can be used for opening a channel or the system device on it.
abBoardAlias	uint8_t[16]	This is an alternate, user-definable name for the device
ulDeviceNumber	uint32_t	Device number (as found on the matrix label)
ulSerialNumber	uint32_t	Serial number (as found on the matrix label)
usFWMajor	uint16_t	Major version number of firmware
usFWMinor	uint16_t	Minor version number of firmware
usFWBuild	uint16_t	Build number of firmware
usFWRevision	uint16_t	Revision version number of firmware
bFWNameLength	uint8_t	Length of firmware name
abFWName	uint8_t[63]	Firmware name
usFWYear	uint16_t	Build year of firmware
bFWMonth	uint8_t	Build month of firmware (1..12)
bFWDay	uint8_t	Build day of firmware (1..31)
ulChannelError	uint32_t	Communication channel error from the "Common Status Block"
ulOpenCnt	uint32_t	Number of calls to xChannelOpen for this channel
ulPutPacketCnt	uint32_t	Number of successful transmitted packets
ulGetPacketCnt	uint32_t	Number of successfully received packets
ulMailboxSize	uint32_t	Mailbox size in Bytes
ulIOInAreaCnt	uint32_t	Number of I/O Input areas
ulIOOutAreaCnt	uint32_t	Number of I/O output areas
ulHskSize	uint32_t	RCX_HANDSHAKE_SIZE_8BIT (0x01) or RCX_HANDSHAKE_SIZE_16BIT (0x02)
ulNetxFlags	uint32_t	Actual netX communication flags (usNetxCommFlag)
ulHostFlags	uint32_t	Actual host communication flags (usHostCommFlags)
ulHostCOSFlags	uint32_t	Actual applicaton COS flags (ulApplicationCOS of Control Block)
ulDeviceCOSFlags	uint32_t	Actual communication COS flags (ulCommunicationCOS of Common Status Block)

Table 17: Channel information structure

4.6 Driver-related functions

4.6.1 xDriverOpen

This function opens a connection / handle to the cifX driver.

Function call

```
int32_t xDriverOpen( CIFXHANDLE* phDriver)
```

Arguments

Argument	Data type	Description
phDriver	CIFXHANDLE*	returned handle to the driver

Table 18: xDriverOpen arguments

Return values

CIFX_NO_ERROR if the function succeeds.

If the function fails, a non-zero error code is returned. For a list, see chapter *Error codes* on page 110. You can use the function *xDriverGetErrorDescription()* to get a description of this error.

4.6.2 xDriverClose

This function closes a connection / handle to the cifX driver.

Function call

```
int32_t xDriverClose(          CIFXHANDLE hDriver)
```

Arguments

Argument	Data type	Description
hDriver	CIFXHANDLE	Handle returned by xDriverOpen

Table 19: xDriverClose arguments

Return values

CIFX_NO_ERROR if the function succeeds.

If the function fails, a non-zero error code is returned. For a list, see chapter *Error codes* on page 110. You can use the function *xDriverGetErrorDescription()* to get a description of this error.

4.6.3 xDriverGetInformation

This function retrieves all driver specific information, like version number, build date, etc.

Function call

```
int32_t xDriverGetInformation( CIFXHANDLE    hDriver,
                             uint32_t      ulSize,
                             void*         pvDriverInfo)
```

Arguments

Argument	Data type	Description
hDriver	CIFXHANDLE	Handle returned by xDriverOpen
ulSize	uint32_t	Size of the passed structure
pvDriverInfo	void*	Pointer to a DRIVER_INFORMATION structure, to place returned values in.

Table 20: xDriverGetInformation arguments

Return values

CIFX_NO_ERROR if the function succeeds.

If the function fails, a non-zero error code is returned. For a list, see chapter *Error codes* on page 110. You can use the function *xDriverGetErrorDescription()* to get a description of this error.

Example

```
DRIVER_INFORMATION tDriverInfo = {0};
int32_t lRet = xDriverGetInformation(NULL, sizeof(tDriverInfo), &tDriverInfo);
if( lRet == CIFX_NO_ERROR)
{
}
```


4.6.4 xDriverGetErrorDescription

Look up function for driver errors. The function returns a human-readable error description (English only).

Function call

```
int32_t xDriverGetErrorDescription( int32_t    lError,
                                   char*      szBuffer,
                                   uint32_t    ulBufferLen)
```

Arguments

Argument	Data type	Description
lError	int32_t	Error value returned by any driver function
szBuffer	String	Pointer to a ASCII string buffer, to place returned text in
ulBufferLen	uint32_t	length of the string buffer for returned data

Table 21: xDriverGetErrorDescription arguments

Return values

CIFX_NO_ERROR if the function succeeds.

Example

```
// Read driver error description
char szError[1024] = {0};
xDriverGetErrorDescription( lError,  szError,  sizeof(szError));
```

4.6.5 xDriverEnumBoards

Enumerate all currently handled boards/cards of the driver.

Function call

```
int32_t xDriverEnumBoards(CIFXHANDLE hDriver,
                          uint32_t ulBoard,
                          uint32_t ulSize,
                          void* pvBoardInfo)
```

Arguments

Argument	Data type	Description
hDriver	CIFXHANDLE	Handle to the driver (returned by xDriverOpen)
ulBoard	uint32_t	Board number to return info for. This must be incremented from zero until an error is returned to query all boards
ulSize	uint32_t	length of the Structure passed in pvBoardInfo
pvBoardInfo	void*	Pointer to returned BOARD_INFORMATION structure

Table 22: xDriverEnumBoards arguments

Return values

CIFX_NO_ERROR if the function succeeds.

If the function fails, a non-zero error code is returned. For a list, see chapter *Error codes* on page 110. You can use the function *xDriverGetErrorDescription()* to get a description of this error.

Example

```
int32_t lBoardRet;
do {
    BOARD_INFORMATION tBoardInfo = {0};
    lBoardRet = xDriverEnumBoards(NULL, ulBoardIdx++, sizeof(tBoardInfo), &tBoardInfo);

    if(lBoardRet == CIFX_NO_ERROR)
    {
    }
} while(lBoardRet == CIFX_NO_ERROR);
```

4.6.6 xDriverEnumChannels

Enumerate all available channels on a board/card.

Function call

```
int32_t xDriverEnumChannels(    CIFXHANDLE    hDriver,
                               uint32_t      ulBoard,
                               uint32_t      ulChannel,
                               uint32_t      ulSize,
                               void*         pvChannelInfo)
```

Arguments

Argument	Data type	Description
hDriver	CIFXHANDLE	Handle to the driver (returned by xDriverOpen)
ulBoard	uint32_t	Board number to return info for (constant during channel enumeration).
ulChannel	uint32_t	Channel number to enumerate. This must be incremented from zero until an error is returned to query all channels
ulSize	uint32_t	length of the Structure passed in pvBoardInfo
pvChannelInfo	void*	Pointer to returned CHANNEL_INFORMATION structure

Table 23: xDriverEnumChannels arguments

Return values

CIFX_NO_ERROR if the function succeeds.

If the function fails, a non-zero error code is returned. For a list, see chapter *Error codes* on page 110. You can use the function *xDriverGetErrorDescription()* to get a description of this error.

Example

```
int32_t lChannelRet;
do {
    CHANNEL_INFORMATION tChannelInfo = {0};
    lChannelRet = xDriverEnumChannels(NULL, ulBoardIdx, ulChannelIdx++,
                                     sizeof(tChannelInfo), &tChannelInfo);
    if(lChannelRet == CIFX_NO_ERROR)
    {
    }
} while(lChannelRet == CIFX_NO_ERROR);
```

4.6.7 xDriverRestartDevice

The function can be used to restart a netX board. The driver processes the same functions like on a power on reset (reset the hardware and download the boot loader, firmware and configuration files etc.).

A restart is necessary on PCI based netX boards if a running firmware should be updated or changed. Because on such boards the firmware is not stored in a Flash file system and updating the firmware while it is running in RAM is not possible.

On Windows based systems a restart can also be performed using the *Windows Device Manager* to deactivate/activate the board.

Note: A restart is only performed if no application has an open handle to the board or one of its communication channels.

Function call

```
int32_t APIENTRY xDriverRestartDevice(    CIFXHANDLE hDriver,
                                         char*      szBoardName,
                                         void*      pvData);
```

Arguments

Argument	Data type	Description
hDriver	CIFXHANDLE	Handle to the driver (returned by <i>xDriverOpen</i>)
szBoardName	String	Identifier for the Board. (e.g. "cifX<Board Number>")
pvData	void*	For further extensions can be NULL

Table 24: *xDriverRestartDevice* arguments

Return values

CIFX_NO_ERROR if the function succeeds.

If the function fails, a non-zero error code is returned. For a list, see chapter *Error codes* on page 110. You can use the function *xDriverGetErrorDescription()* to get a description of this error.

4.6.8 xDriverMemoryPointer

Return a pointer to the dual port memory of a board/channel. This function should only be used for debugging purposes, because the function only maps the card memory into the processes memory area.

Function call

```
int32_t xDriverMemoryPointer ( CIFXHANDLE    hDriver,
                              uint32_t      ulBoard,
                              uint32_t      ulCmd,
                              void*         pvMemoryInfo)
```

Arguments

Argument	Data type	Description
hDriver	CIFXHANDLE	Handle to the driver (returned by xDriverOpen)
ulBoard	uint32_t	Board number to return pointer for.
ulCmd	uint32_t	Maps the dual port memory for direct access from an application 1 = CIFX_MEM_PTR_OPEN Map a user specific memory area 2 = CIFX_MEM_PTR_USR -> not supported Release the dual port pointer (same memory structure MUST be passed) 3 = CIFX_MEM_PTR_CLOSE
pvMemoryInfo	void*	Pointer to returned MEMORY_INFORMATION structure Note: The Parameter ulChannel must be inserted!

Table 25: xDriverMemoryPointer arguments

Return values

CIFX_NO_ERROR if the function succeeds.

If the function fails, a non-zero error code is returned. For a list, see chapter *Error codes* on page 110. You can use the function *xDriverGetErrorDescription()* to get a description of this error.

Description of the MEMORY_INFORMATION structure

Value	Data type	Description
pvMemoryID	void*	Identifier of the memory area
ppvMemoryPtr	void**	Memory pointer
pulMemorySize	uint32_t*	Complete size of the mapped memory
ulChannel	uint32_t*	Requested channel number
pulChannelStartOffset	uint32_t*	Start offset of the requested channel
pulChannelSize	uint32_t*	Memory size of the requested channel

Table 26: Memory information (MEMORY_INFORMATION structure)

MEMORY_INFORMATION structure

```

/*****
/*! Memory Information structure
*****/
typedef __CIFx_PACKED_PRE struct MEMORY_INFORMATIONtag
{
    void*          pvMemoryID;          /*!< Identification of the memory area */
    void**         ppvMemoryPtr;        /*!< Memory pointer */
    uint32_t*      pulMemorySize;       /*!< Complete size of the mapped memory */
    uint32_t       ulChannel;           /*!< Requested channel number */
    uint32_t*      pulChannelStartOffset; /*!< Start offset of the requested channel */
    uint32_t*      pulChannelSize;      /*!< Memory size of the requested channel */
} __CIFx_PACKED_POST MEMORY_INFORMATION;

```

Example

```

//=====
// Test memory pointer
//
//
//=====
void TestMemoryPointer( void)
{
    unsigned char abBuffer[100] = {0};

    // Open channel
    uint32_t      ulMemoryID          = 0;
    unsigned char* pabDPMMemory       = NULL;
    uint32_t      ulMemorySize        = 0;
    uint32_t      ulChannelStartOffset = 0;
    uint32_t      ulChannelSize       = 0;
    long          lRet                = CIFX_NO_ERROR;

    MEMORY_INFORMATION tMemory = {0};
    tMemory.pvMemoryID          = &ulMemoryID;          // Identification of the memory area
    tMemory.ppvMemoryPtr        = (void**)&pabDPMMemory; // Memory pointer
    tMemory.pulMemorySize        = &ulMemorySize;        // Complete size of the mapped memory
    tMemory.ulChannel            = CIFX_NO_CHANNEL;        // Requested channel number
    tMemory.pulChannelStartOffset = &ulChannelStartOffset; // Start offset of the requested channel
    tMemory.pulChannelSize        = &ulChannelSize;        // Memory size of the requested channel

    // Open a DPM memory pointer
    lRet = xDriverMemoryPointer( NULL, 0, CIFX_MEM_PTR_OPEN, &tMemory);
    if(lRet != CIFX_NO_ERROR)
    {
        // Failed to get the memory mapping
        ShowError( lRet);
    } else
    {
        // We have a memory mapping
        // Read 100 Bytes
        memcpy( abBuffer, pabDPMMemory, sizeof(abBuffer));

        memcpy( pabDPMMemory, abBuffer, sizeof(abBuffer));
    }

    // Return the DPM memory pointer
    lRet = xDriverMemoryPointer( NULL, 0, CIFX_MEM_PTR_CLOSE, &tMemory);
    ShowError( lRet);
}

```

4.7 System Device-specific functions

The system device is an additional device created by the device driver for each card. The corresponding data area in the DPM is called system channel. All global board information is located in this channel and all functions of the system device are related to the whole card.

For example the processing of a system reset, downloading a channel firmware etc. Downloads are processed via an own mailbox system which is independently from the communication channels.

The device driver uses the system channel for administrative functions (e.g. card start-up) or to process a card reset.

Usually an application has not to work with the system channel as long as it is designed to work with a specific communication channel or fieldbus system.

4.7.1 xSysdeviceOpen

Open a connection to a system device on the passed board.

Function call

```
int32_t xSysdeviceOpen( CIFXHANDLE hDriver,
                        char*        szBoard,
                        CIFXHANDLE*  phSysdevice);
```

Arguments

Argument	Data type	Description
hDriver	CIFXHANDLE	Handle of the driver
szBoard	String	Identifier for the Board. Can be cifX<Board Number> or the associated alias.
phSysdevice	CIFXHANDLE*	Returned handle to the system device, to be used on all other sysdevice functions

Table 27: xSysdeviceOpen arguments

Return values

CIFX_NO_ERROR if the function succeeds.

If the function fails, a non-zero error code is returned. For a list, see chapter *Error codes* on page 110. You can use the function *xDriverGetErrorDescription()* to get a description of this error.

4.7.2 xSysdeviceClose

Close a connection to a system device.

Function call

```
int32_t xSysdeviceClose( CIFXHANDLE hSysdevice)
```

Arguments

Argument	Data type	Description
hSysdevice	CIFXHANDLE	Handle of the system device that is to be closed.

Table 28: xSysdeviceClose arguments

Return values

CIFX_NO_ERROR if the function succeeds.

If the function fails, a non-zero error code is returned. For a list, see chapter *Error codes* on page 110. You can use the function *xDriverGetErrorDescription()* to get a description of this error.

4.7.3 xSysdeviceInfo

Query information about the opened system device.

Function call

```
int32_t xSysdeviceInfo(    CIFXHANDLE    hSysdevice,
                          uint32_t      ulCmd,
                          uint32_t      ulSize,
                          void*         pvInfo)
```

Arguments

Argument	Data type	Description
hSysdevice	CIFXHANDLE	Handle of the system device
ulCmd	uint32_t	Available Commands: 1 = CIFX_INFO_CMD_SYSTEM_INFORMATION 2 = CIFX_INFO_CMD_SYSTEM_INFO_BLOCK 3 = CIFX_INFO_CMD_SYSTEM_CHANNEL_BLOCK 4 = CIFX_INFO_CMD_SYSTEM_CONTROL_BLOCK 5 = CIFX_INFO_CMD_SYSTEM_STATUS_BLOCK
ulSize	uint32_t	Size of the passed system info buffer
pvInfo	void*	Pointer to SYSTEM_CHANNEL_INFORMATION structure for returned data

Table 29: xSysdeviceInfo arguments

Return values

CIFX_NO_ERROR if the function succeeds.

If the function fails, a non-zero error code is returned. For a list, see chapter *Error codes* on page 110. You can use the function *xDriverGetErrorDescription()* to get a description of this error.

4.7.4 xSysdeviceReset

This function performs a firmware restart. Depending on the hardware and the implementation in the firmware, this is a software restart or a complete hardware reset.

Usually a software reset is performed.

Note: All channels will be reset.

Function call

```
int32_t xSysdeviceReset( CIFXHANDLE hSysdevice,
                        uint32_t ulTimeout)
```

Arguments

Argument	Data type	Description
hSysdevice	CIFXHANDLE	Handle of the system device
ulTimeout	uint32_t	Timeout in ms to wait for reset to complete

Table 30: xSysdeviceReset arguments

Return values

CIFX_NO_ERROR if the function succeeds.

If the function fails, a non-zero error code is returned. For a list, see chapter *Error codes* on page 110. You can use the function *xDriverGetErrorDescription()* to get a description of this error.

4.7.5 xSysdeviceResetEx

This function performs a firmware restart and allows to define a restart mode (*ulMode*), describing further functions executed by the firmware, during the restart.

Depending on the hardware and the implementation in the firmware, this is a software restart or a complete hardware reset.

Note: All channels will be reset.

Function call

```
int32_t xSysdeviceResetEx( CIFXHANDLE    hSysdevice,
                           uint32_t      ulTimeout,
                           uint32_t      ulMode)
```

Arguments

Argument	Data type	Description
hSysdevice	CIFXHANDLE	Handle of the system device
ulTimeout	uint32_t	Timeout in ms to wait for reset to complete
ulMode	uint32_t	Reset Mode & Parameter See following tables: Table 32 and Table 33.

Table 31: xSysdeviceResetEx arguments

ulMode for netX 90/4000/4100 only

Bit No.	Definition / Description
31..9	empty / undefined
8	Delete complete remanent data area after reset. 1 = Remanent data area will be deleted. 0 = Remanent data area will not be deleted. This option is only available for the modes BOOTSTART and UPDATESTART. In mode BOOTSTART, the remanent area is deleted when the maintenance firmware starts up. In mode UPDATESTART, the remanent is only deleted after a successful firmware installation.
7..4	Reset parameter for mode "update start" Arguments that will be evaluated during "update start". 0x0 ... 0xF = Specifies the firmware variant to be installed. 0x0 corresponds to VAR0, 0x1 corresponds to VAR1, etc.

3..0	Reset Mode
	0 = CIFX_RESETEX_SYSTEMSTART System start The system start will perform a reset (coldstart) of the device and will start the installed firmware again.
	1 = reserved
	2 = CIFX_RESETEX_BOOTSTART Boot start Note: The boot start is usable for Flash-based devices only. The boot start will perform a reset of the device and will start the maintenance firmware. The boot start can be used to activate the maintenance firmware without starting an update process (idle mode).
	3 = CIFX_RESETEX_UPDATESTART Update start The update start will perform a reset of the device and will start the maintenance firmware. If a valid update file is available, it will be automatically processed and installed. If no update file is available or if the update file is not valid, the maintenance firmware will change into error mode, changes the SYS LED (to yellow on) and sets an error code (e.g. ERR_HIL_NOT_AVAILABLE, 0xC0001152).
Other values are reserved	

Table 32: xSysdeviceResetEx: Argument ulMode (netX 90/4000/4100)

ulMode for netX 10/50/51/52/100/500 only

Bit No.	Definition / Description
31..9	empty / undefined
8..4	Without function.
3..0	Reset Mode
	0 = CIFX_RESETEX_SYSTEMSTART System start The system start will perform a reset (coldstart) of the device and will start the installed firmware again.
	1 = reserved
	2 = CIFX_RESETEX_BOOTSTART Boot start Note: The boot start is usable for Flash-based devices only. This will activate the Second Stage Boot Loader (if available in the device). The Second Stage Boot Loader does not start the firmware.
	3 = CIFX_RESETEX_UPDATESTART Update start Function not available.
Other values are reserved	

Table 33: xSysdeviceResetEx: Argument ulMode (netX 10/50/51/52/100/500)

Return values

CIFX_NO_ERROR if the function succeeds.

If the function fails, a non-zero error code is returned. For a list, see chapter *Error codes* on page 110. You can use the function *xDriverGetErrorDescription()* to get a description of this error.

4.7.6 xSysdeviceBootstart

Performs a boot start on the hardware. This is necessary if the Second Stage Boot Loader (netX 10/50/51/52/100/500) or the Maintenance Firmware (netX 90/4000/4100) has to be activated while an executable Firmware is available.

Note: All channels will be reset.

Note: This function is only available on so called Flash-based devices where the Second Stage Boot Loader or the Maintenance Firmware is stored in the Flash of the hardware.

Note: For Maintenance Firmware (netX 90/4000/4100): The boot start activates the maintenance firmware without starting an update process (idle mode). To perform a firmware update, use the `xSysdeviceResetEx` function with “Reset Mode” parameter set to value `CIFX_RESETEX_UPDATESTART`.

Function call

```
int32_t xSysdeviceBootstart(    CIFXHANDLE hSysdevice,
                               uint32_t   ulTimeout)
```

Arguments

Argument	Data type	Description
hSysdevice	CIFXHANDLE	Handle of the system device
ulTimeout	uint32_t	Timeout in ms to wait for reset to complete

Table 34: xSysdeviceBootstart arguments

Return values

`CIFX_NO_ERROR` if the function succeeds.

If the function fails, a non-zero error is returned. For a list, see section *Error codes* on page 110. You can use the function `xDriverGetErrorDescription()` to get a description of this error.

4.7.7 xSysdeviceGetMBXState

Retrieve the current load of the system device mailbox. This Function can be used to read the actual state of the channels send and receive mailbox, without accessing the mailbox itself.

Note: Mailboxes are used to pass asynchronous data back and forth between the hardware and the host system. The amount of concurrent active asynchronous commands is limited by the hardware.

Function call

```
int32_t xSysdeviceGetMBXState( CIFXHANDLE    hSysdevice,
                               uint32_t*     pulRecvPktCount,
                               uint32_t*     pulSendPktCount )
```

Arguments

Argument	Data type	Description
hSysdevice	CIFXHANDLE	Handle of the system device.
pulRecvPktCount	uint32_t*	Number of packets waiting to be received by Host
pulSendPktCount	uint32_t*	Number of packets the Host is able to send at once.

Table 35: xSysdeviceGetMBXState arguments

Return values

CIFX_NO_ERROR if the function succeeds.

If the function fails, a non-zero error code is returned. For a list, see chapter *Error codes* on page 110. You can use the function *xDriverGetErrorDescription()* to get a description of this error.

4.7.8 xSysdevicePutPacket

Insert an asynchronous command (packet) into the system device send mailbox to send it to the hardware. This function uses the system device mailbox.

Function call

```
int32_t xSysdevicePutPacket(    CIFXHANDLE    hSysdevice,  
                               CIFX_PACKET*    ptSendPacket,  
                               uint32_t        ulTimeout)
```

Arguments

Argument	Data type	Description
hChannel	CIFXHANDLE	Handle of the system device.
ptSendPacket	CIFX_PACKET*	Packet to be send. Total data length is acquired through the ulLen element inside the structure.
ulTimeout	uint32_t	Time in ms to wait for the mailbox to get free. 0 means, do not wait

Table 36: xSysdevicePutPacket arguments

Return values

CIFX_NO_ERROR if the function succeeds.

If the function fails, a non-zero error code is returned. For a list, see chapter *Error codes* on page 110. You can use the function *xDriverGetErrorDescription()* to get a description of this error.

4.7.9 xSysdeviceGetPacket

Retrieve an already waiting, asynchronous data packet from the system device receive mailbox.

Function call

```
int32_t xSysdeviceGetPacket(    CIFXHANDLE    hSysdevice,
                               uint32_t      ulSize,
                               CIFX_PACKET*   ptRecvPacket,
                               uint32_t      ulTimeout)
```

Arguments

Argument	Data type	Description
hSysdevice	CIFXHANDLE	Handle of the system device.
ulSize	uint32_t	Size of the passed receive packet buffer
ptRecvPacket	CIFX_PACKET*	Buffer to returned packet
ulTimeout	uint32_t	Time in ms to wait for a receive message. 0 means, do not wait

Table 37: xSysdeviceGetPacket arguments

Return values

CIFX_NO_ERROR if the function succeeds.

If the function fails, a non-zero error code is returned. For a list, see chapter *Error codes* on page 110. You can use the function *xDriverGetErrorDescription()* to get a description of this error.

4.7.10 xSysdeviceDownload

Downloading files to the board via the system device.

Due to the limited size of the mailbox these downloads are slower than using the channels mailbox and should only be used if the channel's firmware is not running yet.

Download mode definitions can be found in the cifXUser.h file.

Available download modes

Definition	Mode	Description
DOWNLOAD_MODE_FIRMWARE	1	Download a firmware file (file extension *.nxf)
DOWNLOAD_MODE_CONFIG	2	Download a fieldbus configuration file (file extension *.nxd)
DOWNLOAD_MODE_FILE	3	Download any file (file extension *.*)
DOWNLOAD_MODE_BOOTLOADER	4	Special download mode only supported by the Second Stage Boot Loader to update itself in Flash memory
DOWNLOAD_MODE_LICENSECODE	5	Download a license file (file extension *.nxl) License files containing license flags which are stored on the hardware.
DOWNLOAD_MODE_MODULE	6	Download a firmware module file (file extension *.nxo) Firmware modules are dynamically loadable and require a so-called base firmware

Table 38: Download modes

Note: **xSysdeviceDownload() is not working if called with *DOWNLOAD_MODE_FIRMWARE* on so called "RAM-based devices" like on CIFX PCI/PCIe cards or devices where the firmware is not stored into Flash.**

It is not possible to use this function to download a firmware, because of the circumstance that a firmware running in RAM is not able to update itself in RAM at the same time.

Function call

```
int32_t xSysdeviceDownload(
    CFXHANDLE
    uint32_t
    uint32_t
    char*
    uint8_t*
    uint32_t
    PFN_PROGRESS_CALLBACK
    PFN_RECV_PKT_CALLBACK
    void*
    hSysdevice,
    ulChannel,
    ulMode,
    pszFileName,
    pabFileData,
    ulFileSize,
    pfnCallback,
    pfnRecvPktCallback,
    pvUser)
```

Arguments

Argument	Data type	Description
hSysdevice	CIFXHANDLE	Handle of the system device, the download is performed on.
ulChannel	uint32_t	Number of the channel, to receive the file
ulMode	uint32_t	Download mode (see above)
pszFileName	char*	Short file name of the passed data on the device.
pabFileData	uint8_t*	File data to download.
ulFileSize	uint32_t	Length of the file in bytes
pfnCallback	PFN_PROGRESS_CALLBACK	Callback function to indicate the download progress. Passing NULL will suppress callbacks.
pfnRecvPktCallback	PFN_RECV_PKT_CALLBACK	Callback function to receive unhandled packets during this function. Passing NULL will suppress callbacks and discard received packets that do not belong to the file download.
pvUser	void*	User parameter which is passed on every callback

Table 39: xSysdeviceDownload arguments

Return values

CIFX_NO_ERROR if the function succeeds.

If the function fails, a non-zero error code is returned. For a list, see chapter *Error codes* on page 110. You can use the function *xDriverGetErrorDescription()* to get a description of this error.

4.7.11 xSysdeviceFindFirstFile

Start enumerating a directory on the device. This call will deliver the first directory/file entry on the device if available.

Function call

```
int32_t xSysdeviceFindFirstFile(    CIFXHANDLE        hSysdevice,
                                   uint32_t        ulChannel,
                                   CIFX_DIRECTORYENTRY* ptDirectoryInfo,
                                   PFN_RECV_PKT_CALLBACK pfnRecvPktCallback,
                                   void*            pvUser)
```

Arguments

Argument	Data type	Description
hSysdevice	CIFXHANDLE	Handle of the system device.
ulChannel	uint32_t	Channel number
ptDirectoryInfo	CIFX_DIRECTORYENTRY*	Returned first directory entry. The szFilename entry can be used to start enumerating on a special file. Must be a zero length string to enumerate the whole directory.
pfnRecvPktCallback	PFN_RECV_PKT_CALLBACK	Callback function to receive unhandled packets during this function. Passing NULL will suppress callbacks and discard received packets that do not belong to the file search.
pvUser	void*	User parameter which is passed on every callback

Table 40: xSysdeviceFindFirstFile arguments

Return values

CIFX_NO_ERROR if the function succeeds.

If the function fails, a non-zero error code is returned. For a list, see chapter *Error codes* on page 110. You can use the function *xDriverGetErrorDescription()* to get a description of this error.

4.7.12 xSysdeviceFindNextFile

Continue enumerating a directory on the device. This function must be called with a previously returned directory entry structure from *xSysdeviceFindFirstFile()*.

Function call

```
int32_t xSysdeviceFindNextFile (    CIFXHANDLE        hSysdevice,  
                                   uint32_t            ulChannel,  
                                   CIFX_DIRECTORYENTRY* ptDirectoryInfo,  
                                   PFN_RECV_PKT_CALLBACK pfnRecvPktCallback,  
                                   void*                pvUser)
```

Arguments

Argument	Data type	Description
hSysdevice	CIFXHANDLE	Handle of the system device.
ulChannel	uint32_t	Channel number
ptDirectoryInfo	CIFX_DIRECTORYENTRY*	Returned directory entry.
pfnRecvPktCallback	PFN_RECV_PKT_CALLBACK	Callback function to receive unhandled packets during this function. Passing NULL will suppress callbacks and discard received packets that do not belong to the file search.
pvUser	void*	User parameter which is passed on every callback

Table 41: xSysdeviceFindNextFile arguments

Return values

CIFX_NO_ERROR if the function succeeds.

If the function fails, a non-zero error code is returned. For a list, see chapter *Error codes* on page 110. You can use the function *xDriverGetErrorDescription()* to get a description of this error.

4.7.13 xSysdeviceUpload

Upload a given file from the device.

Function call

```
int32_t xSysdeviceUpload( CIFXHANDLE      hSysdevice,
                          uint32_t        ulChannel,
                          uint32_t        ulMode,
                          char*           pszFilename,
                          uint8_t*        pabFileData,
                          uint32_t*       pulFileSize,
                          PFN_PROGRESS_CALLBACK pfnCallback,
                          PFN_RECV_PKT_CALLBACK pfnRecvPktCallback,
                          void*           pvUser)
```

Arguments

Argument	Data type	Description
hSysdevice	CIFXHANDLE	Handle of the system device.
ulChannel	uint32_t	Channel number of the file
ulMode	uint32_t	Upload Mode (see section <i>xSysdeviceUpload</i> on page 45)
pszFilename	char*	Name of the file to upload (must conform to 8.3 filename rules)
pabFileData	uint8_t*	Buffer to place uploaded data in
pulFileSize	uint32_t*	[in] Size of the buffer, [out] Number of uploaded bytes
pfnCallback	PFN_PROGRESS_CALLBACK	Callback function to indicate the download progress. Passing NULL will suppress callbacks.
pfnRecvPktCallback	PFN_RECV_PKT_CALLBACK	Callback function to receive unhandled packets during this function. Passing NULL will suppress callbacks and discard received packets that do not belong to the file upload.
pvUser	void*	User parameter which is passed on every callback

Table 42: xSysdeviceUpload arguments

Return values

CIFX_NO_ERROR if the function succeeds.

If the function fails, a non-zero error code is returned. For a list, see chapter *Error codes* on page 110. You can use the function *xDriverGetErrorDescription()* to get a description of this error.

4.7.14 xSysdeviceExtendedMemory

netX based PCI hardware is able to offer a second PCI memory window used to access additional hardware memory, independent of the existing Hilscher dual-port-memory resource.

Depending on the netX hardware, the type of memory resource could differ. Current hardware offers a MRAM (Magnetoresistive Random Access Memory) resource.

The type of additional memory, assembled on the hardware, is defined by information in the hardware security memory. The information is used by the boot loader and firmware to detect and initialize access to the additional memory and the information is also stored in the NETX_SYSTEM_STATUS_BLOCK (see *ulHWFeatures*) to be accessible by a user application.

The *xSysdeviceExtendedMemory()* function offers a command parameter to allow reading information and getting/returning the pointer to the extended memory.

Function call

```
int32_t xSysdeviceExtendedMemory(    CIFXHANDLE    hSysdevice,
                                     uint32_t         ulCmd,
                                     CIFX_EXTENDED_MEMORY_INFORMATION* ptExtMemData);
```

Arguments

Argument	Data type	Description
hSysdevice	CIFXHANDLE	Handle of the system device.
ulCmd	uint32_t	Extended Memory Commands: 1 = CIFX_GET_EXTENDED_MEMORY_INFO 2 = CIFX_GET_EXTENDED_MEMORY_POINTER 3 = CIFX_FREE_EXTENDED_MEMORY_POINTER
ptExtMemData	CIFX_EXTENDED_MEMORY_INFORMATION*	Pointer to an extended memory structure, to store /pass information between driver and application

Table 43: xSysdeviceExtendedMemory arguments

Return values

CIFX_NO_ERROR if the function succeeds.

If the function fails, a non-zero error code is returned. For a list, see chapter *Error codes* on page 110. You can use the function *xDriverGetErrorDescription()* to get a description of this error.

Description of the CIFX_EXTENDED_MEMORY_INFORMATION Structure

Value	Data type	Description
pvMemoryID	void*	Identifier of the memory area
pvMemoryPtr	void*	Memory pointer to the extended memory area
ulMemorySize	uint32_t	Size of the extended memory area
ulMemoryType	uint32_t	Type of the extended memory area (e.g. MRAM)

ulMemoryInformation

									Extended Memory										
31..16	15	14	13	12	11	10	9	8	7	6	5	4	3	2	1	0			
													RAM Type: 0 = None 1 = MRAM 64*16 Bit (1 MBit/128 KB)						
													Reserved						
									Access Type: 00 = No access 01 = external access (host) 10 = internal access 11 = external and internal access reserved										
Unused set to 0																			

Table 44: ulMemoryInformation

Note: *ulMemoryType* defines the type of the assembled/offered memory by the hardware. The type is defined in the hardware security memory.

Available definitions (see rcX_User.h)

```
#define RCX_SYSTEM_EXTMEM_TYPE_MSK          0x0000000F
#define RCX_SYSTEM_EXTMEM_TYPE_NONE        0x00000000
#define RCX_SYSTEM_EXTMEM_TYPE_MRAM_128K   0x00000001

#define RCX_SYSTEM_EXTMEM_ACCESS_MSK        0x000000C0
#define RCX_SYSTEM_EXTMEM_ACCESS_NONE      0x00000000
#define RCX_SYSTEM_EXTMEM_ACCESS_EXTERNAL  0x00000040
#define RCX_SYSTEM_EXTMEM_ACCESS_INTERNAL  0x00000080
#define RCX_SYSTEM_EXTMEM_ACCESS_BOTH      0x000000C0
```

Note: *RCX_SYSTEM_EXTMEM_ACCESS_EXTERNAL* defines exclusive access by a host application while *RCX_SYSTEM_EXTMEM_ACCESS_INTERNAL* defines exclusive access by the firmware. *RCX_SYSTEM_EXTMEM_ACCESS_BOTH* defines access for the firmware and host application. In this case, first half of the memory is reserved for the host application, starting at offset 0 and the second half of the memory is used by the firmware, starting at offset memory size / 2.

CIFX_EXTENDED_MEMORY_INFORMATION structure

```

/*****
/*! Extended memory information structure */
*****/
typedef __CIFx_PACKED_PRE struct CIFX_EXTENDED_MEMORY_INFORMATIONtag
{
    void*          pvMemoryID;          /*!< Identification of the memory area */
    void*          pvMemoryPtr;         /*!< Memory pointer */
    uint32_t       ulMemorySize;        /*!< Memory size of the Extended memory area */
    uint32_t       ulMemoryType;        /*!< Memory type information */
} __CIFx_PACKED_POST CIFX_EXTENDED_MEMORY_INFORMATION;

```

Example

```

//=====
// Test memory pointer
//
//=====
void TestExtendedMemoryPointer( void)
{
    CIFXHANDLE      hSysdevice      = NULL;
    int32_t         lRet            = CIFX_NO_ERROR;
    uint8_t         abBuffer[100] = {0};

    printf("\n--- Test Extended Memory Pointer ---\r\n");

    lRet = xSysdeviceOpen( NULL, "CIFX0", &hSysdevice);

    if ( CIFX_NO_ERROR != lRet)
    {
        ShowError( lRet);
    } else
    {
        CIFX_EXTENDED_MEMORY_INFORMATION tExtMemory = {0};

        // Open a DPM memory pointer
        lRet = xSysdeviceExtendedMemory( hSysdevice, CIFX_GET_EXTENDED_MEMORY_INFO,
                                         &tExtMemory);

        if(lRet != CIFX_NO_ERROR)
        {
            // Failed to get the memory mapping
            ShowError( lRet);
        } else
        {
            /* Get an extended memory pointer */
            lRet = xSysdeviceExtendedMemory( hSysdevice, CIFX_GET_EXTENDED_MEMORY_POINTER,
                                             &tExtMemory);

            if(lRet != CIFX_NO_ERROR)
            {
                // Failed to get the memory mapping
                ShowError( lRet);
            } else
            {
                // We have a memory mapping
                uint8_t* pbExtMem = (uint8_t*)tExtMemory.pvMemoryPtr;

                while( 1 == 1)
                {
                    // Read 100 Bytes
                    memcpy( abBuffer, pbExtMem, sizeof(abBuffer));

                    printf("Read data from the extended memory (%d bytes):\n",
                           sizeof(abBuffer));
                    DumpData( abBuffer, sizeof(abBuffer));

                    printf("Increment the read data:\n");

```



```
    for ( uint32_t ulIdx =0; ulIdx < sizeof(abBuffer); ulIdx++)
    {
        abBuffer[ulIdx] +=1;
    }

    printf("Write data back to the extened memory:\n");
    memcpy( pbExtMem, abBuffer, sizeof(abBuffer));

    printf("Type (A) for again and (S) to stop the extended read/write test:\n");
    if( 'S' == (toupper (_getch())) )
    {
        break;
    }
}
lRet = xSysdeviceExtendedMemory( hSysdevice, CIFX_FREE_EXTENDED_MEMORY_POINTER,
                                &tExtMemory);

if(lRet != CIFX_NO_ERROR)
{
    // Failed to free the memory mapping
    ShowError( lRet);
}
}

/* Close the system device */
lRet = xSysdeviceClose( hSysdevice);
if ( CIFX_NO_ERROR != lRet)
{
    ShowError( lRet);
}
}

// Test done
printf("\n Extended Memory Pointer test done\r\n");
}
```

4.8 Channel-specific functions

Channels (Communication Channels) are the access to a specific fieldbus system running on the netX hardware. Each channel has its own memory area in the DPM and can be handled independently from other channels.

4.8.1 xChannelOpen

Open a connection to a communication / user channel on the given board.

Function call

```
int32_t xChannelOpen(    CIFXHANDLE    hDriver,
                        char*      szBoard,
                        uint32_t    ulChannel,
                        CIFXHANDLE* phChannel)
```

Arguments

Argument	Data type	Description
hDriver	CIFXHANDLE	Handle to the driver (returned by xDriverOpen)
szBoard	char*	Identifier for the Board. Can be cifX<BoardNumber> or the associated alias.
ulChannel	uint32_t	Channel number to open
phChannel	CIFXHANDLE*	Returned handle to the channel, to be used on all other channel functions

Table 45: xChannelOpen arguments

Return values

CIFX_NO_ERROR if the function succeeds.

If the function fails, a non-zero error code is returned. For a list, see chapter *Error codes* on page 110. You can use the function *xDriverGetErrorDescription()* to get a description of this error.

4.8.2 xChannelClose

Close a connection to a communication channel.

Function call

```
int32_t xChannelClose(    CFXHANDLE hChannel)
```

Arguments

Argument	Data type	Description
hChannel	CFXHANDLE	Handle of the channel that is to be closed.

Table 46: xChannelClose arguments

Return values

CIFX_NO_ERROR if the function succeeds.

If the function fails, a non-zero error code is returned. For a list, see chapter *Error codes* on page 110. You can use the function *xDriverGetErrorDescription()* to get a description of this error.

4.8.3 xChannelDownload

Download a file via the communication channel.

Download modes are defined and described in the `xSysdeviceDownload()` function (see section *xSysdeviceUpload* on page 45)

Note: `xChannelDownload()` is not working if called with **DOWNLOAD_MODE_FIRMWARE** on so called "RAM based devices" like on CIFX PCI/PCle cards or devices where the firmware is not stored into Flash.

It is not possible to use this function to download a firmware, because of the circumstance that a firmware running in RAM is not able to update itself in RAM at the same time.

Function call

```
int32_t xChannelDownload( CIFXHANDLE      hChannel,
                          uint32_t        ulMode,
                          char*           pszFileName,
                          uint8_t*        pabFileData,
                          uint32_t        ulFileSize,
                          PFN_PROGRESS_CALLBACK pfnCallback,
                          PFN_RECV_PKT_CALLBACK pfnRecvPktCallback,
                          void*           pvUser)
```

Arguments

Argument	Data type	Description
hChannel	CIFXHANDLE	Handle of the channel, the download is performed on.
ulMode	uint32_t	Download mode (see (see section <i>xSysdeviceUpload</i> on page 45)
pszFileName	char*	Short file name of the passed data on the device.
pabFileData	uint8_t*	File data to download.
ulFileSize	uint32_t	Length of the downloaded file
pfnCallback	PFN_PROGRESS_CALLBACK	Callback function to indicate the download progress. Passing NULL will suppress callbacks.
pfnRecvPktCallback	PFN_RECV_PKT_CALLBACK	Callback function to receive unhandled packets during this function. Passing NULL will suppress callbacks and discard all received packets that do not belong to the file download.
pvUser	void*	User parameter which is passed on every callback

Table 47: *xChannelDownload* arguments

Return values

CIFX_NO_ERROR if the function succeeds.

If the function fails, a non-zero error code is returned. For a list, see chapter *Error codes* on page 110. You can use the function `xDriverGetErrorDescription()` to get a description of this error.

4.8.4 xChannelFindFirstFile

Start enumerating a directory on the channel. This call will deliver the first directory/file entry on the channel if available.

Function call

```
int32_t xChannelFindFirstFile ( CIFXHANDLE          hChannel,
                               CIFX_DIRECTORYENTRY* ptDirectoryInfo,
                               PFN_RECV_PKT_CALLBACK pfnRecvPktCallback,
                               void*                 pvUser )
```

Arguments

Argument	Data type	Description
hChannel	CIFXHANDLE	Handle of the communication channel.
ptDirectoryInfo	CIFX_DIRECTORYENTRY*	Returned first directory entry. The szFilename entry can be used to start enumerating on a special file. Must be a zero length string to enumerate the whole directory.
pfnRecvPktCallback	PFN_RECV_PKT_CALLBACK	Callback function to receive unhandled packets during this function. Passing NULL will suppress callbacks and discard all received packets that do not belong to the file find.
pvUser	void*	User parameter which is passed on every callback

Table 48: xChannelFindFirstFile arguments

Return values

CIFX_NO_ERROR if the function succeeds.

If the function fails, a non-zero error code is returned. For a list, see chapter *Error codes* on page 110. You can use the function *xDriverGetErrorDescription()* to get a description of this error.

4.8.5 xChannelFindNextFile

Continue enumerating a directory on the channel. This function must be called with a previously returned directory entry structure from *xChannelFindFirstFile()*.

Function call

```
int32_t xChannelFindNextFile (  CIFXHANDLE          hChannel,
                               CIFX_DIRECTORYENTRY* ptDirectoryInfo,
                               PFN_RECV_PKT_CALLBACK pfnRecvPktCallback,
                               void*                 pvUser)
```

Arguments

Argument	Data type	Description
hChannel	CIFXHANDLE	Handle of the communication channel.
ptDirectoryInfo	CIFX_DIRECTORYENTRY*	Returned directory entry.
pfnRecvPktCallback	PFN_RECV_PKT_CALLBACK	Callback function to receive unhandled packets during this function. Passing NULL will suppress callbacks and discard all received packets that do not belong to the file find.
pvUser	void*	User parameter which is passed on every callback

Table 49: xChannelFindNextFile arguments

Return values

CIFX_NO_ERROR if the function succeeds.

If the function fails, a non-zero error code is returned. For a list, see chapter *Error codes* on page 110. You can use the function *xDriverGetErrorDescription()* to get a description of this error.

4.8.6 xChannelUpload

Upload a given file from the communication channel.

Function call

```
int32_t xChannelUpload (    CIFXHANDLE        hChannel,
                           uint32_t          ulMode,
                           char*              pszFileName,
                           uint8_t*          pabFileData,
                           uint32_t*         pulFileSize,
                           PFN_PROGRESS_CALLBACK pfnCallback,
                           PFN_RECV_PKT_CALLBACK pfnRecvPktCallback,
                           void*              pvUser)
```

Arguments

Argument	Data type	Description
hChannel	CIFXHANDLE	Handle of the communication channel.
ulMode	uint32_t	Upload Mode (see section <i>xSysdeviceUpload</i> on page 45)
pszFileName	char*	Name of the file to upload (must conform to 8.3 filename rules)
pabFileData	uint8_t*	Buffer to place uploaded data in
pulFileSize	uint32_t*	[in] Size of the buffer, [out] Number of uploaded bytes
pfnCallback	PFN_PROGRESS_CALLBACK	Callback function to indicate the download progress. Passing NULL will suppress callbacks.
pfnRecvPktCallback	PFN_RECV_PKT_CALLBACK	Callback function to receive unhandled packets during this function. Passing NULL will suppress callbacks and discard all received packets that do not belong to the file upload.
pvUser	void*	User parameter which is passed on every callback

Table 50: xChannelUpload arguments

Return values

CIFX_NO_ERROR if the function succeeds.

If the function fails, a non-zero error code is returned. For a list, see chapter *Error codes* on page 110. You can use the function *xDriverGetErrorDescription()* to get a description of this error.

4.8.7 xChannelGetMBXState

Retrieve the current load of the given communication channel mailbox. This Function can be used to read the actual state of the channels send and receive mailbox without accessing the mailbox itself.

Note: Mailboxes are used to pass asynchronous data back and forth between the hardware and the host system. The amount of concurrent active asynchronous commands is limited by the hardware.

Function call

```
int32_t xChannelGetMBXState(    CIFXHANDLE    hChannel,
                                uint32_t*        pulRecvPktCount,
                                uint32_t*        pulSendPktCount)
```

Arguments

Argument	Data type	Description
hChannel	CIFXHANDLE	Handle of the channel.
pulRecvPktCount	uint32_t*	Number of packets waiting to be received by Host
pulSendPktCount	uint32_t*	Number of packets the Host is able to send at once.

Table 51: xChannelGetMBXState arguments

Return values

CIFX_NO_ERROR if the function succeeds.

If the function fails, a non-zero error code is returned. For a list, see chapter *Error codes* on page 110. You can use the function *xDriverGetErrorDescription()* to get a description of this error.

4.8.8 xChannelPutPacket

Insert an asynchronous data packet into the given communication channel send mailbox to send it to the hardware.

Function call

```
int32_t xChannelPutPacket( CIFXHANDLE    hChannel,
                          CIFX_PACKET*  ptSendPacket,
                          uint32_t      ulTimeout )
```

Arguments

Argument	Data type	Description
hChannel	CIFXHANDLE	Handle of the channel.
ptSendPacket	CIFX_PACKET*	Packet to be send. Total data length is acquired through the ulLen element inside the structure.
ulTimeout	uint32_t	Time in ms to wait for the mailbox to get free. 0 means, do not wait

Table 52: xChannelPutPacket arguments

Return values

CIFX_NO_ERROR if the function succeeds.

If the function fails, a non-zero error code is returned. For a list, see chapter *Error codes* on page 110. You can use the function *xDriverGetErrorDescription()* to get a description of this error.

4.8.9 xChannelGetPacket

Retrieve an already waiting, asynchronous data packet from the given communication channel receive mailbox.

Function call

```
int32_t xChannelGetPacket( CIFXHANDLE    hChannel,
                          uint32_t      ulBufferSize,
                          CIFX_PACKET*   ptRecvPacket,
                          uint32_t      ulTimeout )
```

Arguments

Argument	Data type	Description
hChannel	CIFXHANDLE	Handle of the channel.
ulBufferSize	uint32_t	Size of the passed receive packet buffer
ptRecvPacket	CIFX_PACKET*	Buffer to returned packet
ulTimeout	uint32_t	Time in ms to wait for a receive message. 0 means, do not wait

Table 53: xChannelGetPacket arguments

Return values

CIFX_NO_ERROR if the function succeeds.

If the function fails, a non-zero error code is returned. For a list, see chapter *Error codes* on page 110. You can use the function *xDriverGetErrorDescription()* to get a description of this error.

4.8.10 xChannelGetSendPacket

Retrieve the actual data packet send by the host, from the communication channel send mailbox. This function is none destructive. It does not guarantee any data consistency, because data are read without any synchronization.

The function is mainly used for debugging aids.

Function call

```
int32_t xChannelGetSendPacket( CIFXHANDLE    hChannel,
                               uint32_t      ulBufferSize,
                               CIFX_PACKET*   ptRecvPacket )
```

Arguments

Argument	Data type	Description
hChannel	CIFXHANDLE	Handle of the channel.
ulBufferSize	uint32_t	Size of the passed packet buffer
ptRecvPacket	CIFX_PACKET*	Buffer to returned send packet

Table 54: xChannelGetSendPacket arguments

Return values

CIFX_NO_ERROR if the function succeeds.

If the function fails, a non-zero error code is returned. For a list, see chapter *Error codes* on page 110. You can use the function *xDriverGetErrorDescription()* to get a description of this error.

4.8.11 xChannelReset

Reset the given communication channel. The reset function offers a following two modes:

- CIFX_CHANNELINIT Re-initialization of a communication channel
- CIFX_SYSTEMSTART Restart the whole card

Function call

```
int32_t xChannelReset(    CIFXHANDLE    hChannel,
                          uint32_t      ulResetMode,
                          uint32_t      ulTimeout)
```

Arguments

Argument	Data type	Description
hChannel	CIFXHANDLE	Handle of the channel.
ulResetMode	uint32_t	Type of reset to be performed
ulTimeout	uint32_t	Time in ms to wait for the channel to be ready again

Table 55: xChannelReset arguments

Return values

CIFX_NO_ERROR if the function succeeds.

If the function fails, a non-zero error code is returned. For a list, see chapter *Error codes* on page 110. You can use the function *xDriverGetErrorDescription()* to get a description of this error.

4.8.12 xChannelInfo

Retrieve the global communication channel information.

Function call

```
int32_t xChannelInfo(    CFXHANDLE    hChannel,
                        uint32_t    ulSize,
                        void*        pvChannelInfo)
```

Arguments

Argument	Data type	Description
hChannel	CIFXHANDLE	Handle of the channel.
ulSize	uint32_t	Length of the passed buffer.
pvChannelInfo	void*	Pointer to a CHANNEL_INFORMATION structure, for returned data

Table 56: xChannelInfo arguments

Return values

CIFX_NO_ERROR if the function succeeds.

If the function fails, a non-zero error code is returned. For a list, see chapter *Error codes* on page 110. You can use the function *xDriverGetErrorDescription()* to get a description of this error.

4.8.13 xChannellIOInfo

Retrieve I/O information about the communication channel.

Function call

```
int32_t xChannellIOInfo(    CFXHANDLE    hChannel,
                           uint32_t      ulCmd,
                           uint32_t      ulAreaNumber,
                           uint32_t      ulSize,
                           void*         pvData)
```

Arguments

Argument	Data type	Description
hChannel	CFXHANDLE	Handle of the channel.
ulCmd	uint32_t	1 = CIFX_IO_INPUT_AREA 2 = CIFX_IO_OUTPUT_AREA
ulAreaNumber	uint32_t	Area number to query information for
ulSize	uint32_t	Length of the passed buffer.
pvData	void*	Pointer to a CHANNEL_IO_INFORMATION structure, for returned data

Table 57: xChannellIOInfo arguments

Return values

CIFX_NO_ERROR if the function succeeds.

If the function fails, a non-zero error code is returned. For a list, see chapter *Error codes* on page 110. You can use the function *xDriverGetErrorDescription()* to get a description of this error.

4.8.14 xChannelWatchdog

Enable, trigger or disable the host watchdog. The watchdog function is used by a communication channel to supervise the processing of the user application. If the watchdog is configured it will be activated with the first call of the function *xChannelWatchdog()* passing the command *CIFX_WATCHDOG_START*. Once activated, the application must trigger it cyclically, during the configured watchdog time. The watchdog supervision is deactivated by passing *CIFX_WATCHDOG_STOP* in the call of *xChannelWatchdog()*.

Function call

```
int32_t xChannelWatchdog( CIFXHANDLE    hChannel,
                          uint32_t      ulCmd,
                          uint32_t*      pulTrigger)
```

Arguments

Argument	Data type	Description
hChannel	CIFXHANDLE	Handle of the channel.
ulCmd	uint32_t	Watchdog Command Start and trigger the watchdog monitoring 1 = CIFX_WATCHDOG_START Stop the watchdog monitoring 0 = CIFX_WATCHDOG_STOP
pulTrigger	uint32_t*	Last trigger value from the hardware

Table 58: xChannelWatchdog arguments

Return values

CIFX_NO_ERROR if the function succeeds.

If the function fails, a non-zero error code is returned. For a list, see chapter *Error codes* on page 110. You can use the function *xDriverGetErrorDescription()* to get a description of this error.

4.8.15 xChannelConfigLock

Lock the configuration of the channel against modification. If the configuration is locked, the fieldbus stack does not allow doing a configuration update.

Function call

```
int32_t xChannelConfigLock(    CFXHANDLE    hChannel,
                               uint32_t      ulCmd,
                               uint32_t*     pulState,
                               uint32_t      ulTimeout)
```

Arguments

Argument	Data type	Description
hChannel	CIFXHANDLE	Handle of the channel.
ulCmd	uint32_t	Configuration Lock Command Unlock configuration 0 = CIFX_CONFIGURATION_UNLOCK Lock configuration 1 = CIFX_CONFIGURATION_LOCK Read the locking state 2 = CIFX_CONFIGURATION_GETLOCKSTATE
pulState	uint32_t*	returned state, if the CIFX_CONFIGURATION_GETLOCKSTATE command is used
ulTimeout	uint32_t	Timeout in ms to wait for configuration lock becoming active

Table 59: xChannelConfigLock arguments

Return values

CIFX_NO_ERROR if the function succeeds.

If the function fails, a non-zero error code is returned. For a list, see chapter *Error codes* on page 110. You can use the function *xDriverGetErrorDescription()* to get a description of this error.

4.8.16 xChannelHostState

Toggle the '*Application Ready State Flag*' in the communication channel host handshake flags. This function is used to signal a communication stack the presents of a user application.

How the fieldbus stack uses the information is stack depending. Usually the stack will use the information to verify if the I/O data in the I/O image are valid.

Function call

```
int32_t xChannelHostState( CFXHANDLE    hChannel,
                          uint32_t      ulCmd,
                          uint32_t*     pulState,
                          uint32_t      ulTimeout)
```

Arguments

Argument	Data type	Description
hChannel	CFXHANDLE	Handle of the channel.
ulCmd	uint32_t	Host State Command Clears the application ready flag 0 = CFX_HOST_STATE_NOT_READY Sets the application ready flag 1 = CFX_HOST_STATE_READY Read the current state of the flag 2 = CFX_HOST_STATE_READ
pulState	uint32_t*	Returns the actual state of the application ready flag if CFX_HOST_STATE_READ command is used
ulTimeout	uint32_t	Timeout in milliseconds. If not 0, the function will wait the given time until the state is changed

Table 60: xChannelHostState arguments

Return values

CIFX_NO_ERROR if the function succeeds.

If the function fails, a non-zero error code is returned. For a list, see chapter *Error codes* on page 110. You can use the function *xDriverGetErrorDescription()* to get a description of this error.

4.8.17 xChannelBusState

Toggle the 'Bus State Flag' in the communication channel handshake flags. Using this flag, the host application allows or disallows the firmware to open network connections. If set (CIFX_BUS_STATE_ON), the netX firmware tries to open network connections; if cleared (CIFX_BUS_STATE_OFF), no connections are allowed and open connections are closed (See reference [1] for further information).

In generally a fieldbus stack allows the configuration of the field bus start-up behavior. This can be either 'automatic startup' or 'controlled startup'. If the stack is configured in 'controlled startup' (i.e. the 'Bus State Flag' is cleared) it will not activate the bus communication until it receives a CIFX_BUS_STATE_ON state in its handshake flags.

Note: Setting the 'Bus State flag' to CIFX_BUS_STATE_ON successfully does not necessarily mean that the fieldbus stack has established a connection to the fieldbus system. The routine will signal an absent connection by returning the error code CIFX_DEV_NO_COM_FLAG (even though toggle of the 'Bus state flag' has succeeded).

Function call

```
int32_t xChannelBusState( CIFXHANDLE    hChannel,
                          uint32_t      ulCmd,
                          uint32_t*     pulState,
                          uint32_t      ulTimeout )
```

Arguments

Argument	Data type	Description
hChannel	CIFXHANDLE	Handle of the channel.
ulCmd	uint32_t	Bus State Commands: Clears the BUS state flag 0 = CIFX_BUS_STATE_OFF Sets the bus state flag 1 = CIFX_BUS_STATE_ON Read the actual state of the bus state flag 2 = CIFX_BUS_STATE_GETSTATE
pulState	uint32_t*	Actual state returned
ulTimeout	uint32_t	Timeout in milliseconds. If not 0, the function will wait until the communication has reached the chosen state.

Table 61: xChannelBusState arguments

Return values

CIFX_NO_ERROR if the function succeeds.

CIFX_DEV_NO_COM_FLAG if the function succeeds but fieldbus stack does not communicate.

If the function fails, a non-zero error code is returned. For a list, see chapter *Error codes* on page 110. You can use the function *xDriverGetErrorDescription()* to get a description of this error.

4.8.18 xChannelControlBlock

Reading / writing the communication channel control block.

Note: Due to endianness conversion, offset parameter on big-endian targets must be set to '0'.

Function call

```
int32_t xChannelControlBlock ( CIFXHANDLE    hChannel,
                               uint32_t      ulCmd,
                               uint32_t      ulOffset,
                               uint32_t      ulDataLen,
                               void*         pvData );
```

Arguments

Argument	Data type	Description
hChannel	CIFXHANDLE	Handle of the channel.
ulCmd	uint32_t	Control block commands: Read the block area 1 = CIFX_CMD_READ_DATA Write the block area 2 = CIFX_CMD_WRITE_DATA
ulOffset	uint32_t	Start offset in the block area Big-endian targets: 0
ulDataLen	uint32_t	Number of bytes to read
pvData	void*	User buffer

Table 62: xChannelControlBlock arguments

Return values

CIFX_NO_ERROR if the function succeeds.

If the function fails, a non-zero error code is returned. For a list, see chapter *Error codes* on page 110. You can use the function *xDriverGetErrorDescription()* to get a description of this error.

4.8.19 xChannelCommonStatusBlock

Read the channels common status block.

Note: Writing of the common status block by an application is not allowed.

Note: Due to endianness conversion, offset parameter on big-endian targets must be set to '0'.

Function call

```
int32_t xChannelCommonStatusBlock ( CIFXHANDLE    hChannel,
                                     uint32_t      ulCmd,
                                     uint32_t      ulOffset,
                                     uint32_t      ulDataLen,
                                     void*         pvData );
```

Arguments

Argument	Data type	Description
hChannel	CIFXHANDLE	Handle of the channel.
ulCmd	uint32_t	Status block commands: Read the block area 1 = CIFX_CMD_READ_DATA
ulOffset	uint32_t	Start offset in the block area Big-endian targets: 0
ulDataLen	uint32_t	Number of bytes to read
pvData	void*	User buffer

Table 63: xChannelCommonStatusBlock arguments

Return values

CIFX_NO_ERROR if the function succeeds.

If the function fails, a non-zero error code is returned. For a list, see chapter *Error codes* on page 110. You can use the function *xDriverGetErrorDescription()* to get a description of this error.

4.8.20 xChannelExtendedStatusBlock

Read the communication channels extended status block.

Note: Writing of the extended status block by an application is not allowed

Function call

```
int32_t xChannelExtendedStatusBlock (    CIFXHANDLE    hChannel,
                                         uint32_t      ulCmd,
                                         uint32_t      ulOffset,
                                         uint32_t      ulDataLen,
                                         void*          pvData);
```

Arguments

Argument	Data type	Description
hChannel	CIFXHANDLE	Handle of the channel.
ulCmd	uint32_t	Extended status block commands: Read the block area 1 = CIFX_CMD_READ_DATA
ulOffset	uint32_t	Start offset in the block area
ulDataLen	uint32_t	Number of bytes to read
pvData	void*	User buffer

Table 64: xChannelExtendedStatusBlock arguments

Return values

CIFX_NO_ERROR if the function succeeds.

If the function fails, a non-zero error code is returned. For a list, see chapter *Error codes* on page 110. You can use the function *xDriverGetErrorDescription()* to get a description of this error.

4.8.21 xChannelUserBlock

not implemented yet!

4.8.22 xChannellIORead

The function reads the input process data image of a communication channel and afterwards it instructs the fieldbus protocol to update input data image with actual (latest) fieldbus data.

If the function returns error CIFX_NO_COM_FLAG, the protocol stack does not have an active network connection and the input data are not up to date. The protocol stack must be started and configured (see errors CIFX_DEV_NOT_READY / CIFX_DEV_NOT_RUNNING).

Note: On the basis of the implementation, xChannellIORead() delivers the input data from the "last" call of xChannellIORead() and not the "latest" input data from the fieldbus system. This has the advantage that the function has not to wait for the data update of the fieldbus protocol which could need a significant time which are several hundred microseconds up to milliseconds depending to the configuration and the number of devices connected to the fieldbus system. But also the limitation that the age of the input data are depending of the cycle time used to call xChannellIORead().

Function call

```
int32_t xChannellIORead(  CIFXHANDLE    hChannel,
                          uint32_t      ulAreaNumber,
                          uint32_t      ulOffset,
                          uint32_t      ulDataLen,
                          void*         pvData,
                          uint32_t      ulTimeout)
```

Arguments

Argument	Data type	Description
hChannel	CIFXHANDLE	Handle of the channel.
ulAreaNumber	uint32_t	Number of the I/O Input area to get data from
ulOffset	uint32_t	Offset inside area to start reading data from
ulDataLen	uint32_t	Length of the data being retrieved
pvData	void*	Pointer to the return data buffer
ulTimeout	uint32_t	Timeout in ms to wait for I/O handshake completion of the channel (if configured)

Table 65: xChannellIORead arguments

Return values

CIFX_NO_ERROR if the function succeeds.

If the function fails, a non-zero error code is returned. For a list, see chapter *Error codes* on page 110. You can use the function *xDriverGetErrorDescription()* to get a description of this error.

4.8.23 xChannellOWrite

The function writes the output process data image of a communication channel and instructs the fieldbus protocol to send the data to the fieldbus system.

The function can also be used to initialize the output data image the first time, before the fieldbus system starts the network data transfer. The fieldbus protocol will always be informed to update the internal output data image by the written data, even if the functions detects that no bus communication is running (error return CIFX_NO_COM_FLAG).

The only requirement is a started and configured fieldbus protocol (see errors CIFX_DEV_NOT_READY / CIFX_DEV_NOT_RUNNING).

Note: The function xChannellOWrite() does not wait until the data are taken by the hardware or physically transferred by the fieldbus system, because this depends at least on the fieldbus connection and the cycle time of the fieldbus system which are usually unknown.

Function call

```
int32_t xChannellOWrite(  CIFXHANDLE    hChannel,
                          uint32_t      ulAreaNumber,
                          uint32_t      ulOffset,
                          uint32_t      ulDataLen,
                          void*         pvData,
                          uint32_t      ulTimeout)
```

Arguments

Argument	Data type	Description
hChannel	CIFXHANDLE	Handle of the channel.
ulAreaNumber	uint32_t	Number of the I/O Output area to send data to
ulOffset	uint32_t	Offset inside area to start writing data to
ulDataLen	uint32_t	Length of the data being send
pvData	void*	Pointer to the send data buffer
ulTimeout	uint32_t	Timeout in ms to wait for I/O handshake completion of the channel (if configured)

Table 66: xChannellOWrite arguments

Return values

CIFX_NO_ERROR if the function succeeds.

If the function fails, a non-zero error code is returned. For a list, see chapter *Error codes* on page 110. You can use the function *xDriverGetErrorDescription()* to get a description of this error.

4.8.24 xChannellIOReadSendData

Read back the actual content of the output process data image from a communication channel.

Function call

```
int32_t xChannellIOReadSendData( CIFXHANDLE    hChannel,
                                uint32_t       ulAreaNumber,
                                uint32_t       ulOffset,
                                uint32_t       ulDataLen,
                                void*          pvData)
```

Arguments

Argument	Data type	Description
hChannel	CIFXHANDLE	Handle of the channel.
ulAreaNumber	uint32_t	Number of the I/O Output area to get data from
ulOffset	uint32_t	Offset inside area to start reading data from
ulDataLen	uint32_t	Length of the data being received
pvData	void*	Pointer to the returned data buffer

Table 67: xChannellIOReadSendData arguments

Return values

CIFX_NO_ERROR if the function succeeds.

If the function fails, a non-zero error code is returned. For a list, see chapter *Error codes* on page 110. You can use the function *xDriverGetErrorDescription()* to get a description of this error.

4.8.25 PLC I/O image functions

Note: Do not use `xChannelIORead()/xChannelIOWrite()` functions while using the PLC functions. If PLC functions are used, the application is responsible to synchronize I/O data access by using the `xChannelPLCIsReady...()/xChannelPLCActivate...()` functions. There is no internal synchronization mechanism available to synchronize access states between `xChannelIORead()/xChannelIOWrite()` and the PLC functions. Mixing the functions will result in unpredictable I/O states.

Some of the PLC programs (Programmable Logic Controller also known as SoftPLCs) are using an own process data image layout. Such programs need to copy the process data, from the local buffers, necessary for the standard `xChannelIORead()/xChannelIOWrite()` functions, into their own data image layout. In such a case, process data are always copied two times. First time between the cards I/O process data image and the local function buffers offered by the application and the second time between the local buffers and the PLC specific process images.

PLC functions are design to save the copy between the cards I/O process data image and the local function buffers (done by `xChannelIORead()/xChannelIOWrite()`).

Therefore `xChannelIORead()` and `xChannelIOWrite()` are split into separate functions. One function to get data pointers to the input and output process data image which can be used by the application to directly access the cards I/O process data image. And two other functions to control and synchronize the access to the cards I/O process image data between the user application and the fieldbus protocol, running on the card.

- `xChannelPLCMemoryPtr`
Getting the data pointers to the cards I/O process data image
- `xChannelPLCActivateRead()` / `xChannelPLCActivateWrite()`
Activate the data exchange of the cards I/O process data image with the fieldbus protocol running on the card
- `xChannelPLCIsReadReady()` / `xChannelPLCIsWriteReady()`
Check if the fieldbus protocol has finished the access to the crads I/ process data image and if the application is allowed to access the data

Important for the use of the functions is a prior call to the `xChannelPLCMemoryPtr()` function. This will deliver the necessary pointers to the I/O process data image.

Note: If the PLC functions are used, the application is responsible to synchronize the data access between the host and the communication channel.

Before closing an application, all memory pointers retrieved by calling `xChannelPLCMemoryPtr()`, (command **CIFX_MEM_PTR_OPEN**) should be returned to the system to avoid memory leaks. Pointers are returned by calling `xChannelPLCMemoryPtr()` using the **CIFX_MEM_PTR_CLOSE** command.

4.8.25.1 xChannelPLCMemoryPtr

Retrieve a memory pointer to the I/O data area for a PLC (Programmable Logic Controller). This enables an application to write data directly to the dual port memory (I/O data image) without doing a combined handshake like in *xChannelIORead()* or *xChannelIOWrite()*.

Before closing an application, all retrieved pointers should be released to avoid system memory leaks. Releasing a pointer is done by calling *xChannelPLCMemoryPtr()* using the **CIFX_MEM_PTR_CLOSE** command.

Function call

```
int32_t xChannelPLCMemoryPtr(  CIFXHANDLE  hChannel,
                               uint32_t    ulCmd,
                               void*        pvMemoryInfo)
```

Arguments

Argument	Data type	Description
hChannel	CIFXHANDLE	Handle of the channel.
ulCmd	uint32_t	PLC Memory Pointer Commands: Acquire a memory pointer 1 = CIFX_MEM_PTR_OPEN Map a user specific memory area 2 = CIFX_MEM_PTR_USR -> not supported Release a memory pointer 3 = CIFX_MEM_PTR_CLOSE
pvMemoryInfo	void*	Pointer to PLC_MEMORY_INFORMATION structure. This structure describes the requested area and also contains the returned memory pointer on success

Table 68: xChannelPLCMemoryPtr arguments

Return values

CIFX_NO_ERROR if the function succeeds.

If the function fails, a non-zero error code is returned. For a list, see chapter *Error codes* on page 110. You can use the function *xDriverGetErrorDescription()* to get a description of this error.

Description of the PLC_MEMORY_INFORMATION Structure

Value	Data type	Description
pvMemoryID	void*	Identifier of the memory area
ppvMemoryPtr	void**	Memory pointer
ulAreaDefinition	uint32_t	Input / Output area
ulAreaNumber	uint32_t	Area number (0..1)
pulIOAreaStartOffset	uint32_t*	Buffer to store the I/O area start offset
pulAreaSize	uint32_t*	Buffer to store the size of the I/O area

PLC_MEMORY_INFORMATION Structure

```

/*****
/*! PLC Memory Information structure
/*****
typedef __CIFx_PACKED_PRE struct PLC_MEMORY_INFORMATIONtag
{
    void*          pvMemoryID;          /*!< Identification of the memory area    */
    void**         ppvMemoryPtr;        /*!< Memory pointer                      */
    uint32_t       ulAreaDefinition;    /*!< Input/output area                  */
    uint32_t       ulAreaNumber;        /*!< Area number                        */
    uint32_t*      pulIOAreaStartOffset; /*!< Start offset                      */
    uint32_t*      pulIOAreaSize;       /*!< Memory size                       */
} __CIFx_PACKED_POST PLC_MEMORY_INFORMATION;

```

Example

```

//=====
// Test PLC Functions
//
//
//=====
void TestPLCFunctions( void)
{
    unsigned char abBuffer[1000] = {0};
    uint32_t      ulState         = 0;

    printf("\n--- Test PLC functions ---\r\n");

    long lRet = CIFX_NO_ERROR;

    /* Open channel */
    CIFXHANDLE hDevice = NULL;
    lRet = xChannelOpen(NULL, "CIFx0", 0, &hDevice);
    if(lRet != CIFX_NO_ERROR)
    {
        ShowError(lRet);
    } else
    {
        /* Start PLC functions */
        unsigned char* pabDPMMemory = NULL;
        uint32_t       ulAreaStartOffset = 0;
        uint32_t       ulAreaSize       = 0;
        long           lRet              = CIFX_NO_ERROR;
        long           lRetIN            = CIFX_NO_ERROR;
        long           lRetOUT           = CIFX_NO_ERROR;

        /* Define the memory structures for Input data */
        PLC_MEMORY_INFORMATION tMemory = {0};
        tMemory.pvMemoryID        = NULL; // Identification of the memory area
        tMemory.ppvMemoryPtr      = (void**)&pabDPMMemory; // Memory pointer
        tMemory.ulAreaDefinition  = CIFX_IO_INPUT_AREA; // Input/output area
        tMemory.ulAreaNumber      = 0; // Area number
        tMemory.pulIOAreaStartOffset = &ulAreaStartOffset; // Start offset of the requested channel
        tMemory.pulIOAreaSize      = &ulAreaSize; // Memory size of the requested channel

        /* Define the memory structures for Output data */
        unsigned char* pabDPMMemory_OUT = NULL;
        uint32_t       ulAreaStartOffset_OUT = 0;

```

```

uint32_t      ulAreaSize_OUT      = 0;

PLC_MEMORY_INFORMATION tMemory_OUT = {0};
tMemory_OUT.pvMemoryID      = NULL;           // Identification of the memory
area
tMemory_OUT.ppvMemoryPtr     = (void*)&pabDPMMemory_OUT; // Memory pointer
tMemory_OUT.ulAreaDefinition = CIFX_IO_OUTPUT_AREA;      // Input/output area
tMemory_OUT.ulAreaNumber     = 0;               // Area number
tMemory_OUT.pulIOAreaStartOffset = &ulAreaStartOffset_OUT; // Start offset of the requested
channel
tMemory_OUT.pulIOAreaSize     = &ulAreaSize_OUT;        // Memory size of the requested
channel

/* Open a DPM memory pointer */
if ( (CIFX_NO_ERROR != (lRetIN = xChannelPLCMemoryPtr( hDevice, CIFX_MEM_PTR_OPEN, &tMemory))) )
||
    (CIFX_NO_ERROR != (lRetOUT = xChannelPLCMemoryPtr( hDevice, CIFX_MEM_PTR_OPEN,
&tMemory_OUT))) )
{
    // Failed to get the memory mapping
    ShowError( lRetIN);
    ShowError( lRetOUT);
} else
{
    uint32_t ulWaitBusCount = 100;

    /* Signal application is ready */
    lRet = xChannelHostState( hDevice, CIFX_HOST_STATE_READY, &ulState, 100);
    if( CIFX_NO_ERROR != lRet)
    {
        ShowError(lRet);
    }

    /* Wait until BUS is up and running */
    printf("\r\nWait until BUS communication is available!\r\n");
    do
    {
        lRet = xChannelBusState( hDevice, CIFX_BUS_STATE_ON, &ulState, 100);
        if( CIFX_NO_ERROR != lRet)
        {
            if( CIFX_DEV_NO_COM_FLAG != lRet)
            {
                ShowError(lRet);
                break;
            }
        } else if( 1 == ulState)
        {
            /* Bus is ON */
            printf("\r\nBUS is ON!\r\n");
            break;
        }
    } while ( --ulWaitBusCount > 0);

    if( 0 == ulWaitBusCount)
    {
        ShowError(lRet);
    }

    /*-----*/
    /* Start cyclic data IO */
    /*-----*/
    if( CIFX_NO_ERROR == lRet)
    {
        printf("\n Press any key to stop \r\n");
        while (!_kbhit())
        {
            // We have a memory mapping, check if access to the DPM is allowed
            uint32_t ulReadState = 0;
            uint32_t ulWriteState = 0;

            /*-----*/
            /* Check if we can access the INPUT image */
            /*-----*/

            lRet = xChannelPLCIsReadReady ( hDevice, 0, &ulReadState);
            if( CIFX_NO_ERROR != lRet)
            {
                ShowError( lRet);
            } else if( 1 == ulReadState)

```

```

    {
        /* It is allowed to read the image */
        /* Read 100 Bytes */
        memcpy( abBuffer, pabDPMMemory, sizeof(abBuffer));

        /* Activate transfer */
        lRet = xChannelPLCActivateRead ( hDevice, 0);
        if( CIFX_NO_ERROR != lRet)
            ShowError( lRet);
    }

    /*-----*/
    /* Check if we can access the OUTPUT image */
    /*-----*/
    lRet = xChannelPLCIsWriteReady ( hDevice, 0, &ulWriteState);
    if( CIFX_NO_ERROR != lRet)
    {
        ShowError( lRet);
    } else if( 1 == ulWriteState)
    {
        /* It is allowed to write the image */
        pabDPMMemory_OUT[0]++;
        pabDPMMemory_OUT[1] = abBuffer[1];

        lRet = xChannelPLCActivateWrite ( hDevice, 0);
        if( CIFX_NO_ERROR != lRet)
            ShowError( lRet);
    }
}

/* clean keyboard buffer */
_getch();
}

lRet = xChannelBusState( hDevice, CIFX_BUS_STATE_OFF, &ulState, 100);
if(CIFX_NO_ERROR != lRet)
{
    ShowError(lRet);
}

lRet = xChannelHostState( hDevice, CIFX_HOST_STATE_NOT_READY, &ulState, 100);
if(CIFX_NO_ERROR != lRet)
{
    ShowError(lRet);
}

/* Return the DPM memory pointer */
if ( NULL != pabDPMMemory)
{
    lRet = xChannelPLCMemoryPtr( hDevice, CIFX_MEM_PTR_CLOSE, &tMemory);
    if(lRet != CIFX_NO_ERROR)
        /* Failed to return memory pointer */
        ShowError( lRet);
}

/* Return the DPM memory pointer */
if ( NULL != pabDPMMemory_OUT)
{
    lRet = xChannelPLCMemoryPtr( hDevice, CIFX_MEM_PTR_CLOSE, &tMemory_OUT);
    if(lRet != CIFX_NO_ERROR)
        /* Failed to return memory pointer */
        ShowError( lRet);
}

// Close channel
if( hDevice != NULL) xChannelClose(hDevice);
}

printf("\n Test PLC functions done\r\n");
}

```

4.8.25.2 xChannelPLCActivateRead

Instruct the communication channel to refresh the input process data image. The end of the update cycle must be checked by the application using the function *xChannelPLCIsReadReady()*

Note: Do not call this function while the actual state is '*not finished*' (check with the corresponding *xChannelPLCIs.....Ready()* function), otherwise the result is unpredictable.

Function call

```
int32_t xChannelPLCActivateRead(    CIFXHANDLE    hChannel,
                                   uint32_t        ulAreaNumber)
```

Arguments

Argument	Data type	Description
hChannel	CIFXHANDLE	Handle of the channel.
ulAreaNumber	uint32_t	Number of the I/O area to request a input data refresh

Table 69: *xChannelPLCActivateRead* arguments

Return values

CIFX_NO_ERROR if the function succeeds.

If the function fails, a non-zero error code is returned. For a list, see chapter *Error codes* on page 110. You can use the function *xDriverGetErrorDescription()* to get a description of this error.

4.8.25.3 xChannelPLCActivateWrite

Instruct the communication channel to refresh the output process data image with the data from the dual port memory. The end of the update cycle must be checked by the user application, using the function *xChannelPLCsWriteReady()*.

Note: Do not call this function while the actual state is '*not finished*' (check with the corresponding *xChannelPLCs.....Ready()* function), otherwise the result is unpredictable.

Function call

```
int32_t xChannelPLCActivateWrite(    CFXHANDLE    hChannel,
                                     uint32_t      ulAreaNumber)
```

Arguments

Argument	Data type	Description
hChannel	CFXHANDLE	Handle of the channel.
ulAreaNumber	uint32_t	Number of the I/O area to request a output data refresh

Table 70: *xChannelPLCActivateWrite* arguments

Return values

CIFX_NO_ERROR if the function succeeds.

If the function fails, a non-zero error code is returned. For a list, see chapter *Error codes* on page 110. You can use the function *xDriverGetErrorDescription()* to get a description of this error.

4.8.25.4 xChannelPLCIsReadReady

Check if the last read request of the I/O data image is processed and finished by the hardware.

Function call

```
int32_t xChannelPLCIsReadReady( CIFXHANDLE    hChannel,
                                uint32_t      ulAreaNumber,
                                uint32_t*     pulReadState)
```

Arguments

Argument	Data type	Description
hChannel	CIFXHANDLE	Handle of the channel.
ulAreaNumber	uint32_t	Number of the I/O area to check for read request completion
pulReadState	uint32_t *	Returned state of the handshake operation 0 = pending !=0 = finished

Table 71: xChannelPLCIsReadReady arguments

Return values

CIFX_NO_ERROR if the function succeeds.

If the function fails, a non-zero error code is returned. For a list, see chapter *Error codes* on page 110. You can use the function *xDriverGetErrorDescription()* to get a description of this error.

4.8.25.5 xChannelPLCIsWriteReady

Check if the last write request handshake is processed and finished by the hardware.

Function call

```
int32_t xChannelPLCIsWriteReady(    CIFXHANDLE    hChannel,
                                   uint32_t      ulAreaNumber,
                                   uint32_t*      pulWriteState)
```

Arguments

Argument	Data type	Description
hChannel	CIFXHANDLE	Handle of the channel.
ulAreaNumber	uint32_t	Number of the I/O area to check for read request completion
pulWriteState	uint32_t*	Returned state of the handshake operation 0 = pending !=0 = finished

Table 72: xChannelPLCIsWriteReady arguments

Return values

CIFX_NO_ERROR if the function succeeds.

If the function fails, a non-zero error code is returned. For a list, see chapter *Error codes* on page 110. You can use the function *xDriverGetErrorDescription()* to get a description of this error.

4.8.26 DMA functions

4.8.26.1 xChannelDMAState

Toggle the '*DMA Enable Flag*' in the communication channel handshake flags. This function can be used to change the I/O image transfer from DPM to bus-master-DMA mode. If PLC memory functions are used, the I/O image pointers need to be re-read after enabling/disabling DMA mode.

Note: DMA is only possible on PCI based hardware. On none PCI based hardware, this function is not available and will return with an error

Function call

```
int32_t xChannelDMAState( CIFXHANDLE    hChannel,
                          uint32_t      ulCmd,
                          uint32_t*      pulState)
```

Arguments

Argument	Data type	Description
hChannel	CIFXHANDLE	Handle of the channel.
ulCmd	uint32_t	DMA State Commands: Disable DMA mode 0 = CIFX_DMA_STATE_OFF Enable DMA mode 1 = CIFX_DMA_STATE_ON Get actual DMA state 2 = CIFX_DMA_STATE_GETSTATE
pulState	uint32_t*	Actual state returned

Table 73: xChannelDMAState arguments

Return values

CIFX_NO_ERROR if the function succeeds.

If the function fails, a non-zero error code is returned. For a list, see chapter *Error codes* on page 110. You can use the function *xDriverGetErrorDescription()* to get a description of this error.

4.8.27 Notification functions

Notification functions can be used for devices running in interrupt mode. These functions are registering a callback for pre-defined events from the hardware.

The callback function is called if the corresponding event occurs on the device.

Note: Notification functions are only available for devices running in interrupt mode.

Available notifications

Notification	Definition	Description
Packet transfer	CIFX_NOTIFY_RX_MBX_FULL	Receive mailbox full (packet available)
	CIFX_NOTIFY_TX_MBX_EMPTY	Send mailbox is empty (packet can be send)
I/O data transfer	CIFX_NOTIFY_PD0_IN	Input area 0 has been processed (see below)
	CIFX_NOTIFY_PD1_IN	Input area 1 has been processed (see below)
	CIFX_NOTIFY_PD0_OUT	Output area 0 has been processed (see below)
	CIFX_NOTIFY_PD1_OUT	Output area 1 has been processed (see below)
Synchronization	CIFX_NOTIFY_SYNC	Fieldbus synchronous event occurred
Communication Flag State	CIFX_NOTIFY_COM_STATE	Communication state of the communication channel has changed

Table 74: Notification functions

4.8.27.1 Packet transfer notifications

Packet transfer is used for asynchronous command/confirmation data (e. g. SDOs).

Packet data are handled via a mailbox system. In interrupt mode the actual state of the mailbox system (send/receive mailbox) can be signaled by notifications (see above).

4.8.27.2 I/O data transfer notifications

The result of the I/O handling and the corresponding notifications which can be signaled to the user application are depending on the configured I/O data exchange mode. This also effect the handling in the user application, when it is reasonable to call xChannellIORead() and xChannellIOWrite().

Note: "I/O Data Transfer" notifications depending on the so called "I/O Exchange Mode" configured on the device. These modes are defining how notifications are created by the device state changes. The callback functions are called if the driver detects a state change in the device handshake flags. How the application processes the notification is part of the application development and must correspond to the configured mode settings of the device. Handshake modes are described in [1].

Handshake modes are defining which part (device/host) is the active part.

Following modes are known

I/O Exchange mode	Description
uncontrolled	No data access synchronization between host and device. Both systems are running independent of each other and data are exchanged without taking care about data consistency. Notification: NONE
buffered host controlled (default)	The host activates the data transfer between device and host. Actual I/O data from the fieldbus system and from the host are always stored in the local I/O buffers on the device. If the host requests new input data (calling xChannellIORead()), the device will copy the currently available input data from the local buffer to the DPM (PDx_IN area) and signals "data updated" (1). The host can read the new input data with the next call to xChannellIORead(). If the host writes new output data to the DPM (PDx_OUT area) by calling xChannellIOWrite(). The device, will copy the data from the DPM to the local output buffer and signals "data updated" (2) if the copy is done. (1) Notification for the input data: CIFX_NOTIFY_PDx_IN (2) Notification for the output data: CIFX_NOTIFY_PDx_OUT
buffered device controlled	ATTENTION: By default NOT supported from Hilscher Stacks The device will start to copy the actual input data from the fieldbus system to the DPM (PDx_IN area) and signals "input data updated" (1). The user has to call xChannellIORead() to read the input data from the DPM. All further input data received by the fieldbus are stored in the device local input buffer until the host reads the data again. The device requests new output data from the host (2) and until the host has written new data, output data are send from the local device buffer to the fieldbus system. If the host writes new output data (calling xChannellIOWrite()) , the device copies the data to the local output buffer and requests (2) new output data as soon as the copy of the data is done. (1) Notification for the input data: CIFX_NOTIFY_PDx_IN (2) Notification for the output data: CIFX_NOTIFY_PDx_OUT

Table 75: I/O Exchange modes

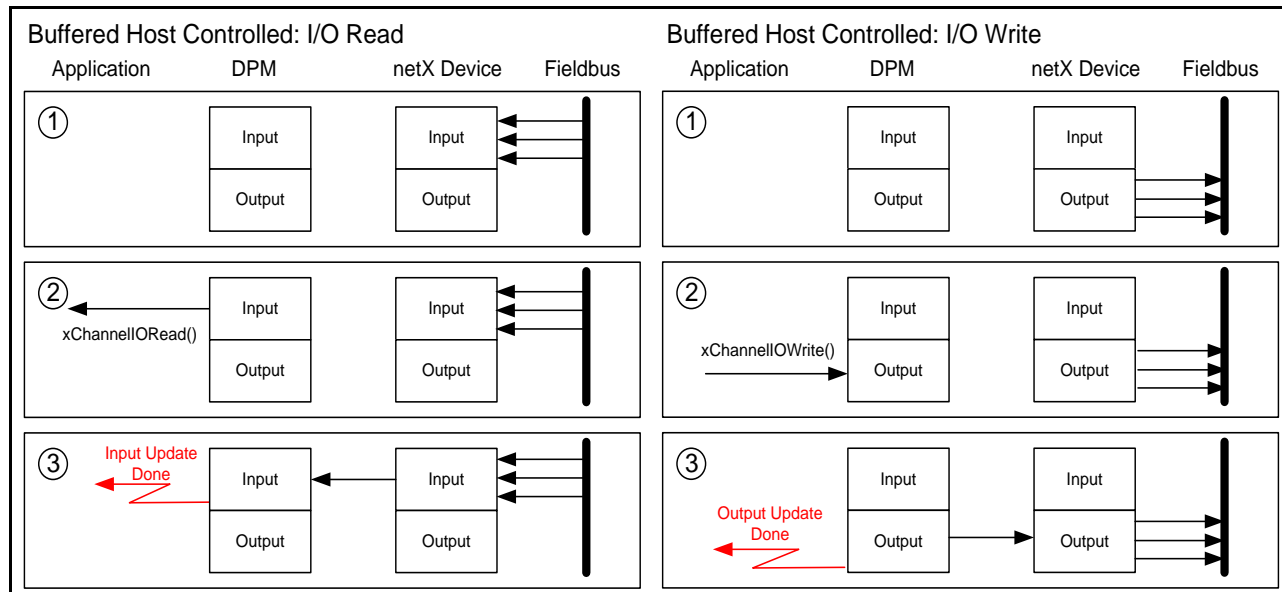
Data Exchange Mode - Buffered Host Controlled I/O

Figure 4: Data Exchange Mode: Buffered Host Controlled I/O

I/O Read		I/O Write	
Step	Description	Step	Description
1	Fieldbus protocol reads input data from the fieldbus system and stores the data in the internal " Input Buffer "	1	Fieldbus protocol sends the output data stored in the internal " Output Buffer " to the fieldbus system
2	Application uses <code>xChannelIORead()</code> which reads the actual data from the DPM (Dual-Ported Memory) PD-IN area and signals the card to update the PD-IN area.	2	Application calls <code>xChannelIOWrite()</code> which write the actual user data to the DPM (Dual-Ported Memory) PD-OUT area and signals the card to update the internal " Output Buffer ".
3	The stack copies the actual data form the internal " Input Buffer " (holding the latest input data) to the DPM PD-IN area. After the data copy, the protocol stack signals " Input Update Done " which schedules a <code>CIFX_NOTIFY_PDx_IN</code> notification.	3	The stack copies the data from the DPM PB-OUT area to the internal " Output Buffer ". After the data copy, the protocol stack signals " Output Update Done " which schedules a <code>CIFX_NOTIFY_PDx_OUT</code> notification.

Table 76: Data Exchange Mode: Buffered Host Controlled I/O (steps)

Note: In these modes, the notifications just inform the application when the input data are copied from the device local input buffer to the DPM and when the output data are copied from the DPM to the device local output buffer. There is no synchronization with any fieldbus data cycle.

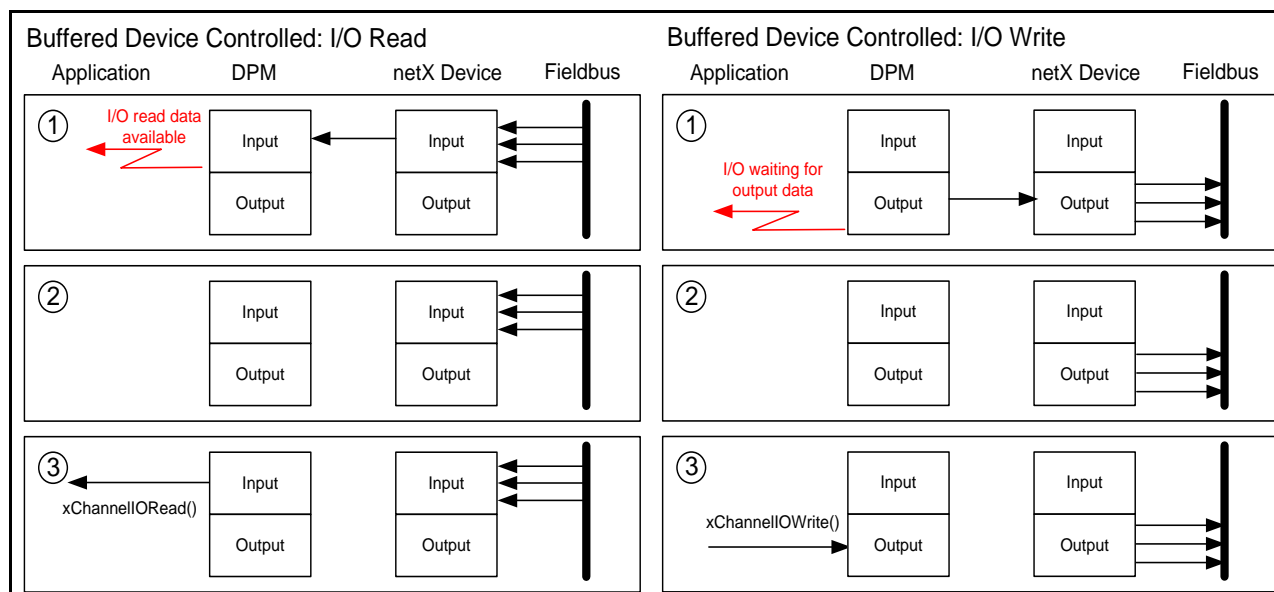
Data Exchange Mode - Buffered Device Controlled I/O

Figure 5: Data Exchange Mode: Buffered Device Controlled I/O

I/O Read		I/O Write	
Step	Description	Step	Description
1	Fieldbus protocol reads input data from the fieldbus system and stores the data in the internal "Input Buffer", copies the data to the DPM (PDx_IN) area. After writing the input data to the DPM (PDx_IN), the device signals "I/O read data available" scheduling a CIFX_NOTIFY_PDx_IN notification.	1	The device takes the output data from the DPM (PDx_OUT area) and copies it to the device local "Output Buffer". After the copy the device requests new output data by signaling a CIFX_NOTIFY_PDx_OUT notification.
2	Any further data from a bus cycle will be stored in the device local input buffer.	2	The device sends the stored output with any further bus cycle
3	If the host reads the input data (by calling <code>xChannelIORead()</code>), the device is signaled "Input data done" than the device is able to update the input data again.	3	If the host writes new output data to the DPM (PDx_OUT) by calling <code>xChannelIOWrite()</code> . The device is signaled "New output data available".

Table 77: Data Exchange Mode: Buffered Device Controlled I/O (steps)

Note: The application determines when read input or write output data. The notification informs the application when read or write is possible. There is no synchronization with any fieldbus data cycle.

Determining the Configured "I/O Exchange Mode"

The configured I/O data exchange (host controlled/device controlled) can be read from the communication channels "Common Status Block" (bPDInHskMode / (bPDOutHskMode). The block can be read and evaluated by the user application using the *xChannelCommonStatusBlock()* function.

The "Common Status Block" is described in the "netX Dual-Port Memory Interface DPM Manual".

Following data exchanges mode definitions are available:

```
/* Block definition: I/O Mode */
#define RCX_IO_MODE_DEFAULT      0x0000    /*!< I/O mode default, for compability reasons this
value is identical to 0x4 (buffered host controlled) */
#define RCX_IO_MODE_BUFF_DEV_CTRL 0x0002    /*!< I/O mode buffered device controlled */
#define RCX_IO_MODE_UNCONTROLLED 0x0003    /*!< I/O mode bus synchronous device controlled */
#define RCX_IO_MODE_BUFF_HST_CTRL 0x0004    /*!< I/O mode buffered host controlled */
```

Note: Possible data exchanges modes are fieldbus protocol specific and described in the corresponding fieldbus "Protocol API" manual.

4.8.27.3 Bus synchronization notifications

The notification functions offering a bus synchronization event if supported by the fieldbus protocol.

Note: "Synchronization" notifications" depending on the so called **"Synchronization Mode"** configured on the device.

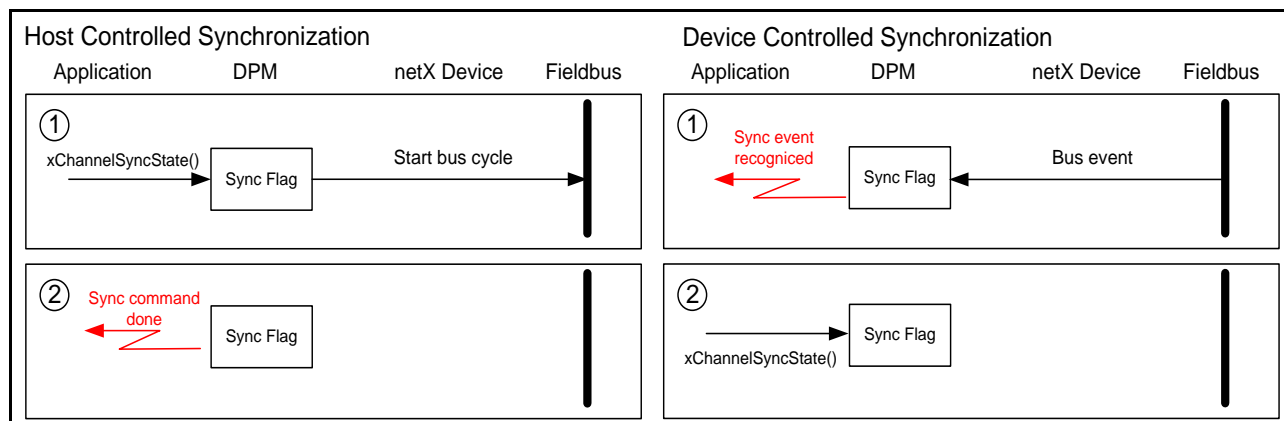


Figure 6: Bus synchronization notifications

Host Controlled Synchronization		Device Controlled Synchronization	
Step	Description	Step	Description
1	The application starts to send a synchronization command <code>xChannelSyncState(CIFX_SYNC_SIGNAL_CMD)</code> to the device. Depending on the configuration the synchronization command (e.g. start bus cycle) is executed by the device.	1	If the fieldbus protocol recognizes the configured sync event, it signals a "Sync event recognized" and scheduled a <code>CIFX_NOTIFY_SYNC</code> notification.
2	The device signals "Sync command done", by scheduling a <code>CIFX_NOTIFY_SYNC</code> notification if the command is processed.	2	Application has to call <code>xChannelSyncState(CIFX_SYNC_SIGNAL_ACK)</code> before a new bus event is signaled again.

Table 78: Bus synchronization notifications (steps)

Determining the Configured "Synchronization Mode"

The configured synchronization mode (host controlled/device controlled) can be read from the communication channels "Common Status Block" (`bSyncHskMode`). The block can be read and evaluated by the user application using the `xChannelCommonStatusBlock()` function.

The "Common Status Block" is described in the "netX Dual-Port Memory Interface DPM Manual".

Following synchronization mode definitions are available:

```
/* Block definition: Synchronization Mode */
#define RCX_SYNC_MODE_OFF                0x00
#define RCX_SYNC_MODE_DEV_CTRL           0x01
#define RCX_SYNC_MODE_HST_CTRL           0x02
```

Note: Possible synchronization modes are fieldbus protocol specific and described in the corresponding fieldbus "Protocol API" manual

4.8.27.4 PFN_NOTIFY_CALLBACK - Callback function definition

Note: The registered callback function will be invoked as soon as the callback is registered and the corresponding event is valid. This could also happen while the user application is still in the *xChannelRegisterNotification()* function call.

Function call

```
void NotificationCallback(uint32_t    ulNotification,
                        uint32_t    ulDataLen,
                        void*       pvData,
                        void*       pvUser);
```

Arguments

Argument	Data type	Description
ulNotification	uint32_t	Occurred event
ulDataLen	uint32_t	Length of additional data
pvData	void*	Additional Data (depends on ulNotification)
pvUser	void*	User parameter from registration

Table 79: PFN_NOTIFY_CALLBACK arguments

Possible notification events

ulNotification	Passed Data	Description
CIFX_NOTIFY_RX_MBX_FULL	Pointer to CIFX_NOTIFY_RX_MBX_FULL_DATA_T structure containing the total number of packets waiting to be read from the device.	Signaled when receive mailbox becomes full and a data packet is available to read.
CIFX_NOTIFY_TX_MBX_EMPTY	Pointer to CIFX_NOTIFY_TX_MBX_EMPTY_DATA_T structure containing the maximum amount of packets which can be send to the device.	Send mailbox becomes empty and a new packet can be send to the device.
CIFX_NOTIFY_PD0_IN	none	Input area 0 has been processed
CIFX_NOTIFY_PD1_IN	none	Input area 1 has been processed
CIFX_NOTIFY_PD0_OUT	none	Output area 0 has been processed
CIFX_NOTIFY_PD1_OUT	none	Output area 1 has been processed
CIFX_NOTIFY_SYNC	none	Bus synchronization notification, signals the SYNC event on the fieldbus/device occurred.
CIFX_NOTIFY_COM_STATE	Pointer to CIFX_NOTIFY_COM_STATE_T structure containing the actual state of the COM-flag	Communication flag notification. Signals state changes of the COM-flag (set or cleared).

Table 80: Notification events

4.8.27.5 xChannelRegisterNotification

Register an event callback for channel events.

Depending on the event type additional information is passed in the callback. If a callback is already registered for the given event, the function will return an error.

It is not possible to register multiple applications for the same notification.

Note: The registered callback function will be invoked as soon as the callback is registered and the corresponding event is valid. This could also happen while the user application is still in the *xChannelRegisterNotification()* function call.

Function call

```
int32_t xChannelRegisterNotification(    CIFXHANDLE    hChannel,
                                         uint32_t      ulNotification,
                                         PFN_NOTIFY_CALLBACK pfnCallback,
                                         void*          pvUser);
```

Arguments

Argument	Data type	Description
hChannel	CIFXHANDLE	Handle of the channel.
ulNotification	uint32_t	Possible Notification: 1 = CIFX_NOTIFY_RX_MBX_FULL 2 = CIFX_NOTIFY_TX_MBX_EMPTY 3 = CIFX_NOTIFY_PD0_IN 4 = CIFX_NOTIFY_PD1_IN 5 = CIFX_NOTIFY_PD0_OUT 6 = CIFX_NOTIFY_PD1_OUT 7 = CIFX_NOTIFY_SYNC 8 = CIFX_NOTIFY_COM_STATE
pfnCallback	PFN_NOTIFY_CALLBACK	Function to be called if event occurs
pvUser	void*	Parameter passed to callback

Table 81: *xChannelRegisterNotification* arguments

Return values

CIFX_NO_ERROR if the function succeeds.

If the function fails, a non-zero error code is returned. For a list, see chapter *Error codes* on page 110. You can use the function *xDriverGetErrorDescription()* to get a description of this error.

4.8.27.6 xChannelUnregisterNotification

Un-registers a previously registered notification event callback function for channel events.

Function call

```
int32_t xChannelUnregisterNotification(    CIFXHANDLE    hChannel,  
                                         uint32_t      ulNotification);
```

Arguments

Argument	Data type	Description
hChannel	CIFXHANDLE	Handle of the channel.
ulNotification	uint32_t	Possible Notification: 1 = CIFX_NOTIFY_RX_MBX_FULL 2 = CIFX_NOTIFY_TX_MBX_EMPTY 3 = CIFX_NOTIFY_PD0_IN 4 = CIFX_NOTIFY_PD1_IN 5 = CIFX_NOTIFY_PD0_OUT 6 = CIFX_NOTIFY_PD1_OUT 7 = CIFX_NOTIFY_SYNC 8 = CIFX_NOTIFY_COM_STATE

Table 82: xChannelUnregisterNotification arguments

Return values

CIFX_NO_ERROR if the function succeeds.

If the function fails, a non-zero error code is returned. For a list, see chapter *Error codes* on page 110. You can use the function *xDriverGetErrorDescription()* to get a description of this error.

4.8.28 Fieldbus synchronization handling

Certain fieldbus protocol stacks are offering so call synchronization functionalities to synchronize devices connected to a fieldbus system.

Such synchronization functions are handled independent from of the cyclic I/O data transfer.

General Definition:

In general, synchronization handling distinguishes between device synchronization and host synchronization operation. The difference between the two modes is the component (host / device) which activates the synchronization and the response to the synchronization signal (event).

- **Host Controlled Synchronization**
In this mode, the host signals a synchronization to the hardware and the hardware has to respond to this signal
- **Device Controlled Synchronization**
In this case, the device starts to signal a synchronization event and the host has to acknowledge the reception of the synch signal.

Synchronization must be handled by the user application and can be done in polling mode (not preferred) and interrupt mode of the hardware. In interrupt mode the drivers notification function is used to handle synchronization event via a user callback function.

Synchronization Handling in Polling Mode

In polling mode the `xChannelSyncState()` function is used to activate (**CIFX_SYNC_SIGNAL_CMD**) or to acknowledge (**CIFX_SYNC_ACKNOWLEDGE_CMD**) a synchronization signal, depending on the configured fieldbus synchronization mode (host controlled / device controlled).

`xChannelSyncState()` can also be used to check (`ulTimeout == 0`) or to wait (`ulTimeout != 0`) for a device synchronization signal. Or until a new host synchronization command can be initiated.

Synchronization Handling in Interrupt Mode

In interrupt mode, the drivers register notification function is used to handle synchronization events. A user application is able to register a callback function for synchronization events (**CIFX_SYNC_EVENT**). The registered callback function will be executed if either the device is signaling a synchronization event or if the device acknowledges a synchronization command initiated by the host application.

- **Device Synchronization Mode**
The host has to register for a synchronization event and if the event occurs (callback function is invoked) the host has to acknowledge the event using the `xChannelSyncState(...CIFX_SYNC_ACKNOWLEDGE_CMD...)`.
- **Host Synchronization Mode**
The host calls `xChannelSyncState(...CIFX_SYNC_SIGNAL_CMD...)` to signal a synchronization. The registered callback function will be invoked if the device acknowledges the command.

Verifying Synchronization Misses:

xChannelSyncState() offers a pointer to an error counter buffer (*pulErrorCount*). This counter can be used by the user application to determine the lost of a synchronization signals.

A changing error counter value between two subsequent *xChannelSyncState()* calls indicates a lost signal. This means, in "Host Controlled Mode", the device was not quick enough to process the previous command and in "Device Controlled Mode", the host has not acknowledged the synchronization signal until the next synchronization signal was initiated.

Determining the Configured Synchronization Mode

The configured synchronization mode (host controlled / device controlled) can be read from the communication channels "Common Status Block" (*bSyncHskMode*). The block can be read and evaluated by the user application using the *xChannelCommonStatusBlock()* function.

The "Common Status Block" is described in the "netX Dual-Port Memory Interface DPM Manual".

Currently the following synchronization modes are defined.

```
/* Block definition: Synchronization Mode */
#define RCX_SYNC_MODE_OFF                0x00
#define RCX_SYNC_MODE_DEV_CTRL          0x01
#define RCX_SYNC_MODE_HST_CTRL          0x02
```

Also the synchronization error counter (*bErrorSyncCnt*) and the synchronization source (*bSyncSource*) can be evaluated from the "Common Status Block".

Note: Fieldbus synchronization must be supported by the used fieldbus protocol stack. Please consult the corresponding fieldbus "Protocol API" manual to make sure synchronization is supported.

Note: Synchronization operation assumes a corresponding fieldbus configuration.

Note: Fieldbus synchronization is a time critical process and should be processed as fast as possible. On Windows operating systems, responds times to synchronization events are not guaranteed and can lead in serious jitter. Usually synchronization will be handled in interrupt mode.

The *xChannelSyncState()* function can also be used in polling mode using a timeout and the *CIFX_SYNC_WAIT_CMD* command, but this will not change the Windows operating system respond timing issues.

Function call

```
int32_t xChannelSyncState(CIFXHANDLE hChannel,
                        uint32_t ulCmd,
                        uint32_t ulTimeout,
                        uint32_t* pulErrorCount)
```

Arguments

Argument	Data type	Description
hChannel	CIFXHANDLE	Handle of the channel.
ulCmd	uint32_t	Synchronization Commands: Signal sync to device 1 = CIFX_SYNC_SIGNAL_CMD Acknowledge a sync that has been set by the device 2 = CIFX_SYNC_ACKNOWLEDGE_CMD Wait for sync being signaled by device (Device Controlled), or until host can signal new Sync State (Host Controlled) 3 = CIFX_SYNC_WAIT_CMD
ulTimeout	uint32_t	Timeout in ms to wait until bits can be signaled or have been signaled by the device
pulErrorCount	uint32_t*	Returned Actual Sync Error counter

Table 83: *xChannelSyncState* arguments

Return values

CIFX_NO_ERROR if the function succeeds.

If the function fails, a non-zero error code is returned. For a list, see chapter *Error codes* on page 110. You can use the function *xDriverGetErrorDescription()* to get a description of this error.

5 Simple C-application example

The simple C application demonstrates the minimum functions which must be called to enable an application to work with a CIFX/COMX/netX based hardware.

The example is named CIFXDEMO and the source, including a Microsoft Visual C++ 6.0 project, can be found on the Hilscher system CDs.

5.1 The Main() function

```
/* ***** */
/*! The main function
* \return 0 on success */
/* ***** */
int main(int argc, char* argv[])
{
    CIFXHANDLE hDriver = NULL;
    int32_t lRet = CIFX_NO_ERROR;

    UNREFERENCED_PARAMETER(argc);
    UNREFERENCED_PARAMETER(argv);

    /* Open the cifX driver */
    lRet = xDriverOpen(&hDriver);

    if(CIFX_NO_ERROR != lRet)
    {
        printf("Error opening driver. lRet=0x%08X\r\n", lRet);
    } else
    {
        /* Example how to find a cifX/comX board */
        EnumBoardDemo(hDriver);

        /* Example how to communicate with the SYSTEM device of a board */
        SysdeviceDemo(hDriver, "cifX0");

        /* Example how to communicate with a communication channel on a board */
        ChannelDemo(hDriver, "cifX0", 0);

        /* Close the cifX driver */
        xDriverClose(hDriver);
    }
    return 0;
}
```


5.2 System device example

```

/*****
*! Function to demonstrate system device functionality (Packet Transfer)
*   \return CIFX_NO_ERROR on success
*/
/*****
int32_t SysdeviceDemo(CIFXHANDLE hDriver, char* szBoard)
{
    int32_t    lRet = CIFX_NO_ERROR;
    CIFXHANDLE hSys = NULL;

    printf("----- System Device handling demo -----\\r\\n");

    /* Driver/Toolkit successfully opened */
    lRet = xSysdeviceOpen(hDriver, szBoard, &hSys);

    if(CIFX_NO_ERROR != lRet)
    {
        printf("Error opening SystemDevice!\\r\\n");
    } else
    {
        SYSTEM_CHANNEL_SYSTEM_INFO_BLOCK tSysInfo      = {0};
        uint32_t                          ulSendPktCount = 0;
        uint32_t                          ulRecvPktCount = 0;
        CIFX_PACKET                       tSendPkt      = {0};
        CIFX_PACKET                       tRecvPkt       = {0};

        /* System channel successfully opened, try to read the System Info Block */
        if( CIFX_NO_ERROR != (lRet = xSysdeviceInfo(hSys,
                                                    CIFX_INFO_CMD_SYSTEM_INFO_BLOCK,
                                                    sizeof(tSysInfo),
                                                    &tSysInfo)))
        {
            printf("Error querying system information block\\r\\n");
        } else
        {
            printf("System Channel Info Block:\\r\\n");
            printf("DPM Size           : %u\\r\\n", tSysInfo.ulDpmTotalSize);
            printf("Device Number      : %u\\r\\n", tSysInfo.ulDeviceNumber);
            printf("Serial Number     : %u\\r\\n", tSysInfo.ulSerialNumber);
            printf("Manufacturer      : %u\\r\\n", tSysInfo.usManufacturer);
            printf("Production Date   : %u\\r\\n", tSysInfo.usProductionDate);
            printf("Device Class       : %u\\r\\n", tSysInfo.usDeviceClass);
            printf("HW Revision        : %u\\r\\n", tSysInfo.bHwRevision);
            printf("HW Compatibility   : %u\\r\\n", tSysInfo.bHwCompatibility);
        }
    }
}

```

```

/* Do a simple Packet exchange via system channel */
xSysdeviceGetMBXState(hSys, &ulRecvPktCount, &ulSendPktCount);
printf("System Mailbox State: MaxSend = %u, Pending Receive = %u\r\n",
      ulSendPktCount, ulRecvPktCount);

if(CIFX_NO_ERROR != (lRet = xSysdevicePutPacket(hSys,
                                              &tSendPkt,
                                              PACKET_WAIT_TIMEOUT)))
{
    printf("Error sending packet to device!\r\n");
} else
{
    printf("Send Packet:\r\n");
    DumpPacket(&tSendPkt);

    xSysdeviceGetMBXState(hSys, &ulRecvPktCount, &ulSendPktCount);
    printf("System Mailbox State: MaxSend = %u, Pending Receive = %u\r\n",
          ulSendPktCount, ulRecvPktCount);

    if(CIFX_NO_ERROR != (lRet = xSysdeviceGetPacket(hSys,
                                                  sizeof(tRecvPkt),
                                                  &tRecvPkt,
                                                  PACKET_WAIT_TIMEOUT)))
    {
        printf("Error getting packet from device!\r\n");
    } else
    {
        printf("Received Packet:\r\n");
        DumpPacket(&tRecvPkt);

        xSysdeviceGetMBXState(hSys, &ulRecvPktCount, &ulSendPktCount);
        printf("System Mailbox State: MaxSend = %u, Pending Receive = %u\r\n",
              ulSendPktCount, ulRecvPktCount);
    }
}

/* Close the system device */
xSysdeviceClose(hSys);
}

printf(" State = 0x%08X\r\n", lRet);
printf("-----\r\n");

return lRet;
}

```

5.3 Communication channel example

```

/*****
/*! Function to demonstrate communication channel functionality
*   Packet Transfer and I/O Data exchange
*   \return CIFX_NO_ERROR on success
*/
*****/
int32_t ChannelDemo(CIFXHANDLE hDriver, char* szBoard, uint32_t ulChannel)
{
    CIFXHANDLE hChannel = NULL;
    int32_t lRet = CIFX_NO_ERROR;

    printf("----- Communication Channel demo ----- \r\n");

    lRet = xChannelOpen(hDriver, szBoard, ulChannel, &hChannel);

    if(CIFX_NO_ERROR != lRet)
    {
        printf("Error opening Channel!");
    } else
    {
        CHANNEL_INFORMATION tChannelInfo = {0};
        CIFX_PACKET tSendPkt = {0};
        CIFX_PACKET tRecvPkt = {0};
        /* Read and write I/O data (32Bytes). Output data will be incremented each
           cycle */
        uint8_t abSendData[32] = {0};
        uint8_t abRecvData[32] = {0};
        uint32_t ulCycle = 0;
        uint32_t ulState = 0;

        /* Channel successfully opened, so query basic information */
        if( CIFX_NO_ERROR != (lRet = xChannelInfo(hChannel,
                                                  sizeof(CHANNEL_INFORMATION),
                                                  &tChannelInfo)))
        {
            printf("Error querying system information block \r\n");
        } else
        {
            printf("Communication Channel Info: \r\n");
            printf("Device Number : %u \r\n", tChannelInfo.ulDeviceNumber);
            printf("Serial Number : %u \r\n", tChannelInfo.ulSerialNumber);
            printf("Firmware : %s \r\n", tChannelInfo.abFWName);
            printf("FW Version : %u.%u.%u build %u \r\n",
                  tChannelInfo.usFWMajor,
                  tChannelInfo.usFWMinor,
                  tChannelInfo.usFWRevision,
                  tChannelInfo.usFWBuild);
            printf("FW Date : %02u/%02u/%04u \r\n",
                  tChannelInfo.bFWMonth,
                  tChannelInfo.bFWDay,
                  tChannelInfo.usFWYear);
            printf("Mailbox Size : %u \r\n", tChannelInfo.ulMailboxSize);
        }
    }
}

```

```
/* Do a basic Packet Transfer */
if(CIFX_NO_ERROR != (lRet = xChannelPutPacket( hChannel,
                                              &tSendPkt,
                                              PACKET_WAIT_TIMEOUT)))
{
    printf("Error sending packet to device!\r\n");
} else
{
    printf("Send Packet:\r\n");
    DumpPacket(&tSendPkt);

    if(CIFX_NO_ERROR != (lRet = xChannelGetPacket(hChannel,
                                                  sizeof(tRecvPkt),
                                                  &tRecvPkt,
                                                  PACKET_WAIT_TIMEOUT)) )
    {
        printf("Error getting packet from device!\r\n");
    } else
    {
        printf("Received Packet:\r\n");
        DumpPacket(&tRecvPkt);
    }
}
```

```

/* Do a basic IO data transfer */
/* Set Host Ready to signal the filed bus an application is ready */
lRet = xChannelHostState(hChannel,
                        CIFX_HOST_STATE_READY,
                        &ulState,
                        HOSTSTATE_TIMEOUT);

if(CIFX_NO_ERROR != lRet)
{
    printf("Error setting host ready!\r\n");
} else
{
    /* Switch on the bus if it is not automatically running (see configuration
    options) */
    lRet = xChannelBusState( hChannel, CIFX_BUS_STATE_ON, &ulState, 0L);
    if(CIFX_NO_ERROR != lRet)
    {
        printf("Unable to start the filed bus!\r\n");
    } else
    {
        /* Do I/O Data exchange until a key is hit */
        while(!kbhit())
        {
            if(CIFX_NO_ERROR != (lRet = xChannelIORead(hChannel,
                                                    0, 0, sizeof(abRecvData),
                                                    abRecvData,
                                                    IO_WAIT_TIMEOUT)))
            {
                printf("Error reading IO Data area!\r\n");
                break;
            } else
            {
                printf("IORead Data:");
                DumpData(abRecvData, sizeof(abRecvData));

                if(CIFX_NO_ERROR != (lRet = xChannelIOWrite(hChannel,
                                                            0, 0, sizeof(abRecvData),
                                                            abRecvData,
                                                            IO_WAIT_TIMEOUT)))
                {
                    printf("Error writing to IO Data area!\r\n");
                    break;
                } else
                {
                    printf("IOWrite Data:");
                    DumpData(abSendData, sizeof(abSendData));

                    /* Create new output data */
                    memset(abSendData, ulCycle + 1, sizeof(abSendData));
                }
            }
        }
    }
}

```

```
/* Switch off the bus */
xChannelBusState( hChannel, CIFX_BUS_STATE_OFF, &ulState, 0L);

/* Set Host not ready to stop bus communication */
xChannelHostState(hChannel, CIFX_HOST_STATE_NOT_READY,
                  &ulState,
                  HOSTSTATE_TIMEOUT);

/* Close the communication channel */
xChannelClose(hChannel);
}

if(CIFX_NO_ERROR != lRet)
{
    char szBuffer[256] = {0};
    xDriverGetErrorDescription(lRet, szBuffer, sizeof(szBuffer));
    printf(" State = 0x%08X <%s>\r\n", lRet, szBuffer);
} else
{
    printf(" State = 0x%08X\r\n", lRet);
}
printf("-----\r\n");

return lRet;
}
```

5.4 Board and channel enumeration

```

/*****
/*! Function to demonstrate the board/channel enumeration
*   \return CIFX_NO_ERROR on success
*/
*****/
void EnumBoardDemo(CIFXHANDLE hDriver)
{
    uint32_t          ulBoard      = 0;
    BOARD_INFORMATION tBoardInfo = {0};

    printf("----- Board/Channel enumeration demo -----\\r\\n");

    /* Iterate over all boards */
    while(CIFX_NO_ERROR == xDriverEnumBoards(hDriver, ulBoard, sizeof(tBoardInfo),
                                              &tBoardInfo))
    {
        uint32_t          ulChannel      = 0;
        CHANNEL_INFORMATION tChannelInfo = {0};

        printf("Found Board %.10s\\r\\n", tBoardInfo.abBoardName);
        if(strlen( (char*)tBoardInfo.abBoardAlias) != 0)
            printf(" Alias      : %.10s\\r\\n", tBoardInfo.abBoardAlias);
        printf(" DeviceNumber : %u\\r\\n", tBoardInfo.tSystemInfo.ulDeviceNumber);
        printf(" SerialNumber : %u\\r\\n", tBoardInfo.tSystemInfo.ulSerialNumber);
        printf(" Board ID    : %u\\r\\n", tBoardInfo.ulBoardID);
        printf(" System Error : 0x%08X\\r\\n", tBoardInfo.ulSystemError);
        printf(" Channels    : %u\\r\\n", tBoardInfo.ulChannelCnt);
        printf(" DPM Size     : %u\\r\\n", tBoardInfo.ulDpmTotalSize);

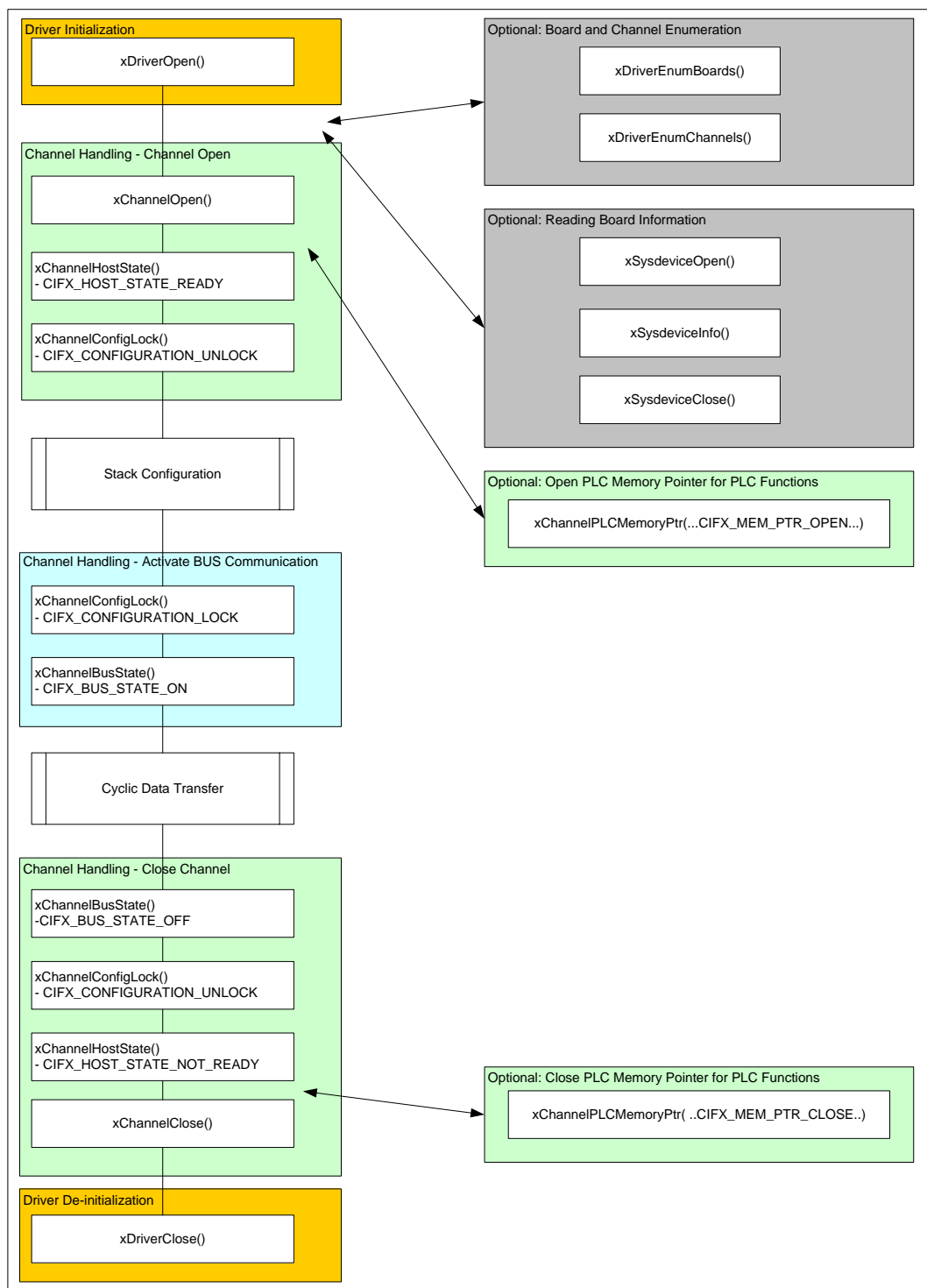
        /* iterate over all channels on the current board */
        while(CIFX_NO_ERROR == xDriverEnumChannels(hDriver, ulBoard, ulChannel,
                                                    sizeof(tChannelInfo), &tChannelInfo))
        {
            printf(" - Channel %u:\\r\\n", ulChannel);
            printf("   Firmware : %s\\r\\n", tChannelInfo.abFWName);
            printf("   Version  : %u.%u.%u build %u\\r\\n",
                tChannelInfo.usFWMajor,
                tChannelInfo.usFWMinor,
                tChannelInfo.usFWBuild,
                tChannelInfo.usFWRevision);
            printf("   Date     : %02u/%02u/%04u\\r\\n",
                tChannelInfo.bFWMonth,
                tChannelInfo.bFWDay,
                tChannelInfo.usFWYear);
            ++ulChannel;
        }
        ++ulBoard;
    }
    printf("-----\\r\\n");
}

```

6 General protocol stack handling

This chapter describes the general usage of the *CIFX API* in conjunction with a fieldbus protocol stack.

6.1 Overview



Driver Initialization

- `xDriverOpen()` **Open the Driver**

Reading Driver Information (Optional)

- `xDriverEnumBoards()` **Enumerate all available Boards**
- `xDriverEnumChannels()` **Enumerate channels on a given board**

Reading Board Information (Optional)

- `xSysdeviceOpen()` **Open the system device of a board**
- `xSysdeviceInfo()` **Read board information board via system channel**
- `xSysdeviceClose()` **Close the system channel**

Channel Handling - Open Channel

- `xChannelOpen()` **Open a communication channel**
- **Optional:** Read the channel I/O memory pointers if the PLC functions `xChannelPLC...` are used for I/O data transfer
`xChannelPLCMemoryPtr(...CIFX_PLC_MEM_PTR_OPEN...)`
- `xChannelHostState(...CIFX_HOST_STATE_READY...)` **Signal Application is online**
Wait until channel is READY if the timeout $\neq 0$
Standard Timeout = 1000 ms
- `xChannelConfigLock(CIFX_CONFIGURATION_UNLOCK)` **Unlock the configuration**

==> Stack Configuration

Channel Handling - Activate BUS Communication

- `xChannelConfigLock(...CIFX_CONFIGURATION_LOCK...)` **Locking of the configuration**
- `xChannelBusState(...CIFX_BUS_STATE_ON...)` **Switch BUS to ON**
Timeout $\neq 0$, waits until BUS is ON
Standard Timeout: 5000 ms

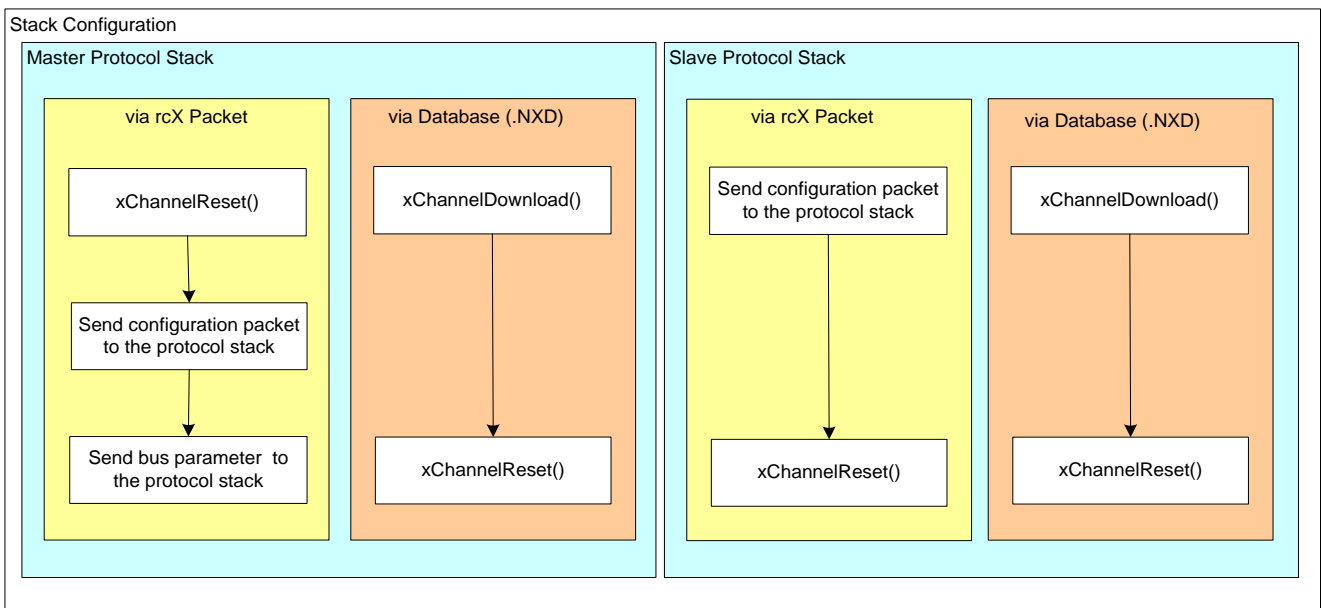
==> Cyclic Data Transfer**Channel Handling - Close Channel**

- `xChannelBusState(...CIFX_BUS_STATE_OFF...)` **Switch off BUS Communication**
Timeout <> 0, the function waits until the BUS is OFF
Standard Timeout: 5000ms
- `xChannelConfigLock(...CIFX_CONFIGURATION_UNLOCK...)` **Unlock the Configuration**
Unlock the configuration for further changes
- `xChannelHostState(...CIFX_HOST_STATE_NOT_READY...)` **User Application Closed**
Signal the protocol stack, no application is online
- `xChannelClose()` **Close Channel**

Driver Deinitialization

- `xDriverClose()` **Close the cifX Driver**

6.2 Protocol stack configuration



Master Stack Configuration - via rcX Packet

- `xChannelReset(...CIFX_CHANNELINIT...)` **Deactivate actual configuration**
Maximum Timeout: 10000ms
- Send configuration
This is described in the protocol API manual
- Send Bus Parameter
This is described in the protocol API manual
Configuration is activated automatically after writing the BUS parameters

Master Stack Configuration - via Database

- `xChannelDownload(...DOWNLOAD_CONFIGURATION...)` **Download a database**
- `xChannelReset(...CIFX_CHANNELINIT...)` **Activate actual configuration**
Maximum Timeout: 10000ms

Slave Stack Configuration: via rcX Packets

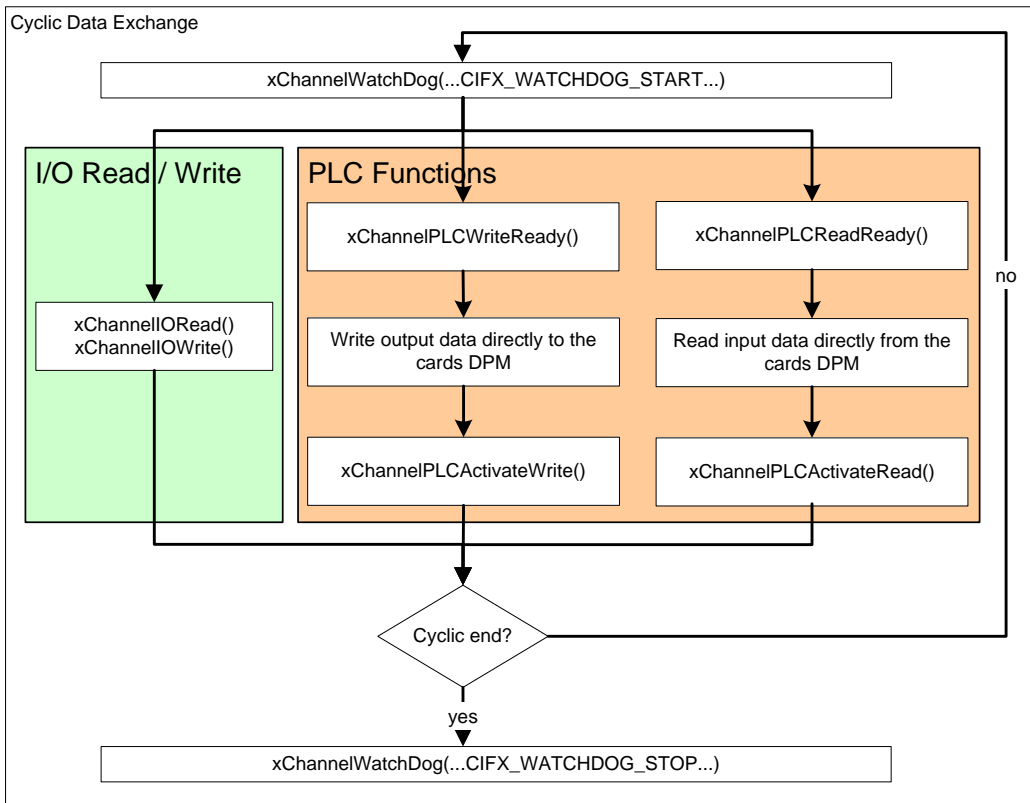
- Send configuration data
- `xChannelReset(...CIFX_CHANNELINIT...)` **Activate the configuration**
Maximum Timeout: 10000ms
- **Optional:** Set watchdog time (`RCX_SET_WATCHDOG_TIME_REQ`) via `xChannelPutPacket()` / `xChannelGetPacket()`)
Standard Put/GetPacket() Timeout: 1000ms

Slave Stack Configuration - via Database

- xChannelDownload(...DOWNLOAD_CONFIGURATION...) **Download a database**
- xChannelReset(...CIFX_CHANNELINIT...) **Activate actual configuration**

Maximum Timeout: 10000ms

6.3 Cyclic data exchange



Activate / Trigger Watchdog

- `xChannelWatchdog (...CIFX_WATCHDOG_START...)` **Activate/Trigger Watchdog**
- **Note:** `xChannelWatchdog()` must be called, with the parameter `CIFX_WATCHDOG_START`, within the configured watchdog time.

Using I/O Read/Write Functions

- `xChannelIOWRead()` / `xChannelIOWrite()` **Read / Write I/O Data**

Using PLC Functions

- `xChannelPLCIsWriteReady()` / `xChannelPLCIsReadReady()` **Use PLC Functions**
Check if DPM access is allowed
- Read / Write data from/to the DPM I/O image areas
- `xChannelPLCActivateRead()` / `xChannelPLCActivateWrite()` **Activate I/O Data Transfer**
Activate data transfer (DPM is switched to hardware)

Deactivate Watchdog

- `xChannelWatchdog (...CIFX_WATCHDOG_STOP...)` **Deactivate Watchdog**

7 Error codes

Error code	Symbol / Description
0x00000000	CIFX_NO_ERROR No error

General error codes (0x800Axxxx)

Error code	Symbol / Description
0x800A0001	CIFX_INVALID_POINTER Invalid pointer (e.g. NULL was passed to the function)
0x800A0002	CIFX_INVALID_BOARD No board with the given name / index available
0x800A0003	CIFX_INVALID_CHANNEL No channel with the given index available
0x800A0004	CIFX_INVALID_HANDLE An invalid handle was passed to the function
0x800A0005	CIFX_INVALID_PARAMETER Invalid parameter passed to the function
0x800A0006	CIFX_INVALID_COMMAND Command parameter is invalid
0x800A0007	CIFX_INVALID_BUFFERSIZE The supplied buffer does not match the expected size
0x800A0008	CIFX_INVALID_ACCESS_SIZE Invalid access size (e.g. I/O area size is exceeded by given offset and length)
0x800A0009	CIFX_FUNCTION_FAILED Generic function failure
0x800A000A	CIFX_FILE_OPEN_FAILED A file cannot not be opened
0x800A000B	CIFX_FILE_SIZE_ZERO File size is zero
0x800A000C	CIFX_FILE_LOAD_INSUFF_MEM Insufficient memory to load file a file to RAM
0x800A000D	CIFX_FILE_CHECKSUM_ERROR File checksum comparison failed
0x800A000E	CIFX_FILE_READ_ERROR Error while reading file
0x800A000F	CIFX_FILE_TYPE_INVALID The given file is invalid for the operation
0x800A0010	CIFX_FILE_NAME_INVALID Invalid filename given
0x800A0011	CIFX_FUNCTION_NOT_AVAILABLE Function is not available on the driver
0x800A0012	CIFX_BUFFER_TOO_SHORT The passed buffer is too short to receive all of the requested data
0x800A0013	CIFX_MEMORY_MAPPING_FAILED Error mapping the dual port memory for later memory access

Error code	Symbol / Description
0x800A0014	CIFX_NO_MORE_ENTRIES No more entries available. Returned by enumeration functions (e.g. xDriverEnumBoards(), directories etc.)
0x800A0015	CIFX_CALLBACK_MODE_UNKNOWN Unknown callback handling mode
0x800A0016	CIFX_CALLBACK_CREATE_EVENT_FAILED Creation of callback events failed
0x800A0017	CIFX_CALLBACK_CREATE_RECV_BUFFER Creation of callback receive buffer failed
0x800A0018	CIFX_CALLBACK_ALREADY_USED Another application has already registered a callback for the given event
0x800A0019	CIFX_CALLBACK_NOT_REGISTERED A callback was not registered before
0x800A001A	CIFX_INTERRUPT_DISABLED Device interrupt is disabled. The executed function expects an enabled hardware interrupt (depending on the driver this must be done either by the device configuration or driver setup program).

Table 84: General Error Codes (0x800Axxxx)

Driver-related error codes (0x800Bxxxx)

Error code	Symbol / Description
0x800B0001	CIFX_DRV_NOT_INITIALIZED Driver was not correctly initialized during startup or driver is already closed
0x800B0002	CIFX_DRV_INIT_STATE_ERROR Initialization state error. Hardware does not show correct or expected states and information in the DPM after a reset or boot start
0x800B0003	CIFX_DRV_READ_STATE_ERROR Driver read state error
0x800B0004	CIFX_DRV_CMD_ACTIVE The called function is in use by another program instance or application
0x800B0005	CIFX_DRV_DOWNLOAD_FAILED General error during download (e.g. boot loader could not be downloaded or started)
0x800B0006	CIFX_DRV_WRONG_DRIVER_VERSION Wrong driver version
0x800B0030	CIFX_DRV_DRIVER_NOT_LOADED CIFX driver is not loaded / running. Failed to open or start the driver, returned by xDriverOpen()
0x800B0031	CIFX_DRV_INIT_ERROR Failed to initialize the driver
0x800B0032	CIFX_DRV_CHANNEL_NOT_INITIALIZED Channel not initialized (e.g. xChannelOpen() not called)
0x800B0033	CIFX_DRV_IO_CONTROL_FAILED Function call into the driver failed (e.g. used by the Windows API DLL to signal problems in IO-Control driver calls)
0x800B0034	CIFX_DRV_NOT_OPENED Driver was not opened by calling xDriverOpen()
0x800B0040	CIFX_DRV_DOWNLOAD_STORAGE_UNKNOWN Unknown download storage type (RAM/FLASH based) found
0x800B0041	CIFX_DRV_DOWNLOAD_FW_WRONG_CHANNEL Channel number for a firmware download not supported
0x800B0042	CIFX_DRV_DOWNLOAD_MODULE_NO_BASEOS Modules are not allowed without a Base OS firmware

Table 85: Driver-related error codes (0x800Bxxxx)

Device / Communication-related error codes (0x800Cxxxx)

Error code	Symbol / Description
0x800C0010	CIFX_DEV_DPM_ACCESS_ERROR Dual port memory not accessible (e.g. board not found, wrong dual port memory content)
0x800C0011	CIFX_DEV_NOT_READY Device is not ready (NSF_READY or NCF_READY flag is not set) The system device or communication channel is not working
0x800C0012	CIFX_DEV_NOT_RUNNING Device is not running (NCF_RUNNING flag is not set). The communication channel is not configured
0x800C0013	CIFX_DEV_WATCHDOG_FAILED Watchdog test failed
0x800C0015	CIFX_DEV_SYSERR Error in handshake flags
0x800C0016	CIFX_DEV_MAILBOX_FULL Send mailbox is full. The PutPacket() function was not able to write a packet to the device mailbox. Either the mailbox state does not show empty or no more resources on the device available. (NSF_SEND_MBX_ACK / HSF_SEND_MBX_CMD or NCF_SEND_MBX_ACK / HCF_SEND_MBX_CMD flags in wrong state or mailbox counter usPackagesAccepted = 0)
0x800C0017	CIFX_DEV_PUT_TIMEOUT Send packet timeout. The PutPacket() function was not able to write a packet to the device mailbox and the wait time in PutPacket() has expired. Either the mailbox state does not show empty or no more resources on the device available. (NSF_SEND_MBX_ACK / HSF_SEND_MBX_CMD or NCF_SEND_MBX_ACK / HCF_SEND_MBX_CMD flags in wrong state or mailbox counter usPackagesAccepted = 0)
0x800C0018	CIFX_DEV_GET_TIMEOUT Receive packet timeout. GetPacket() function was not able to read a packet from the device and the wait time in GetPacket() has expired. Either the mailbox state does not show a packet available or the device has not sent a packet. (NSF_RECV_MBX_CMD / HSF_RECV_MBX_ACK or NCF_RECV_MBX_CMD / HCF_RECV_MBX_ACK flags in wrong state or mailbox counter usWaitingPackages = 0)
0x800C0019	CIFX_DEV_GET_NO_PACKET No packet available. The GetPacket() function was called with timeout = 0 and the function was not able to read a packet from the device. Either the mailbox state does not show a packet available or the device has not sent a packet. (NSF_RECV_MBX_CMD / HSF_RECV_MBX_ACK or NCF_RECV_MBX_CMD / HCF_RECV_MBX_ACK flags in wrong state or mailbox counter usWaitingPackages = 0)
0x800C001A	CIFX_DEV_MAILBOX_TOO_SHORT Mailbox is too short for the given packet. The packet send by PutPacket() does not fit into the mailbox.
0x800C0020	CIFX_DEV_RESET_TIMEOUT Reset command timeout. The device was not reaching READY state, in the given reset timeout, after the application has initiated a reset (RCX_COMM_COS_READY flag not set).
0x800C0021	CIFX_DEV_NO_COM_FLAG Communication flag not set. The fieldbus protocol stack has no communication to the fieldbus devices. Either the cable is disconnected or no other device is connected to the wire (NCF_COMMUNICATING flag not set).

Error code	Symbol / Description
0x800C0022	CIFX_DEV_EXCHANGE_FAILED I/O data exchange failed. Function xChannelIORead() or xChannelIOWrite() fails, because the device does not allow to access the I/O data image. (NCF_PDIN / NCF_PDOUT flags are not in the state allowing access to the I/O process data image)
0x800C0023	CIFX_DEV_EXCHANGE_TIMEOUT I/O data exchange timeout. The given timeout in xChannelIORead() / xChannelIOWrite() expires while the function is waiting to get access to the process data image. (NCF_PDIN / NCF_PDOUT flags are not in the state allowing access to the I/O process data image)
0x800C0024	CIFX_DEV_COM_MODE_UNKNOWN Unknown I/O data exchange mode (mode is not within 0..5)
0x800C0025	CIFX_DEV_FUNCTION_FAILED Device function failed
0x800C0026	CIFX_DEV_DPMSIZE_MISMATCH DPM size differs from configuration, The firmware signals a communication channel size which does not fit into the maximum DPM size defined by the hardware or defined by the user.
0x800C0027	CIFX_DEV_STATE_MODE_UNKNOWN Unknown state mode
0x800C0028	CIFX_DEV_HW_PORT_IS_USED Device is accessed either by another application or another instance. - Driver / device can't be unloaded, open connection to the system device or a communication channels still active - xChannelOpen() can't be executed because it is currently used by another application
0x800C0029	CIFX_DEV_CONFIG_LOCK_TIMEOUT Failed lock the communication channels configuration within the given time. xChannelConfigLock() wait time expired (RCX_COMM_COS_CONFIG_LOCKED flag not set).
0x800C002A	CIFX_DEV_CONFIG_UNLOCK_TIMEOUT Failed to unlock the communication channel configuration within the given time. xChannelConfigLock() wait time expired (RCX_COMM_COS_CONFIG_LOCKED flag not cleared)
0x800C002B	CIFX_DEV_HOST_STATE_SET_TIMEOUT Wait time expires during xChannelHostState() without reaching CIFX_HOST_STATE_READY. (The function was not able to set the RCX_APP_COS_APP_READY flag or the device has not acknowledged the new status in time)
0x800C002C	CIFX_DEV_HOST_STATE_CLEAR_TIMEOUT Wait time expires during xChannelHostState() without reaching CIFX_HOST_STATE_NOT_READY (The function was not able to clear the RCX_APP_COS_APP_READY flag or the device has not acknowledged the new status in time)
0x800C002D	CIFX_DEV_INITIALIZATION_TIMEOUT Timeout during device / channel initialization
0x800C002E	CIFX_DEV_BUS_STATE_ON_TIMEOUT Wait time expires during xChannelBusState() without reaching CIFX_BUS_STATE_ON (RCX_COMM_COS_BUS_ON flag not set) Using a timeout, the function will activate fieldbus communication and waits until communication to another fieldbus device is available (NCF_COMMUNICATION flag is set)

Error code	Symbol / Description
0x800C002F	CIFX_DEV_BUS_STATE_OFF_TIMEOUT Wait time expires during xChannelBusState() without reaching CIFX_BUS_STATE_OFF. (The function was not able to clear the RCX_APP_COS_BUS_ON flag or the device has not acknowledged the new status in time and still signals bus communication is active by RCX_COM_COS_BUS_ON).
0x800C0040	CIFX_DEV_MODULE_ALREADY_RUNNING Firmware module (NXO) download and start failed because a module is already running
0x800C0041	CIFX_DEV_MODULE_ALREADY_EXISTS Firmware module (NXO) download was skipped because the module already exists
0x800C0050	CIFX_DEV_DMA_INSUFF_BUFFER_COUNT Number of configured DMA buffers insufficient (at least 8 buffers are expected) Or xChannelDMAState() is used without previously configured DMA buffers.
0x800C0051	CIFX_DEV_DMA_BUFFER_TOO_SMALL DMA buffers size too small (min. size 256 Byte)
0x800C0052	CIFX_DEV_DMA_BUFFER_TOO_BIG DMA buffers size too big (max. size 63,75 KByte)
0x800C0053	CIFX_DEV_DMA_BUFFER_NOT_ALIGNED DMA buffer alignment failed (must be 256 Byte)
0x800C0054	CIFX_DEV_DMA_HANSHAKEMODE_NOT_SUPPORTED I/O process data exchange mode "uncontrolled" not allowed when DMA transfer is activated
0x800C0055	CIFX_DEV_DMA_IO_AREA_NOT_SUPPORTED I/O process data area index in DMA mode not supported (only area 0 possible)
0x800C0056	CIFX_DEV_DMA_STATE_ON_TIMEOUT Failed to set DMA transfer to "ON" within the given wait time in xChannelDMAState(). (The device has not acknowledged the new status or not set the RCX_COM_COS_DMA flag)
0x800C0057	CIFX_DEV_DMA_STATE_OFF_TIMEOUT Failed to set DMA transfer to "OFF" within the given wait time in xChannelDMAState(). (The device has not acknowledged the new status or not cleared the RCX_COM_COS_DMA flag)
0x800C0058	CIFX_DEV_SYNC_STATE_INVALID_MODE Device is in invalid mode for the command initiated by xChannelSyncState(). The mode must be either "SYNC Host Controlled" (RCX_SYNC_MODE_HST_CTRL) or "SYNC Device Controlled" (RCX_SYNC_MODE_DEV_CTRL)
0x800C0059	CIFX_DEV_SYNC_STATE_TIMEOUT Wait time expired during xChannelSyncState(...,CIFX_SYNC_WAIT_CMD,). Device does not signal the expected synchronization handshake flag state

Table 86: Device / Communication-related error codes (0x800Cxxxx)

8 Appendix

8.1 List of tables

Table 1: List of revisions.....	4
Table 2: Terms, abbreviations and definitions.....	5
Table 3: References to documents	5
Table 4: List of API functions – Driver functions	8
Table 5: List of API functions – System Device functions.....	8
Table 6: List of API functions – Communication Channel functions	10
Table 7: Driver functions	14
Table 8: System Device functions	15
Table 9: Communication Channel functions.....	17
Table 10: Driver information structure (DRIVER_INFORMATION)	18
Table 11: Board information structure (BOARD_INFORMATION)	18
Table 12: System channel information (SYSTEM_CHANNEL_SYSTEM_INFORMATION)	19
Table 13: System channel info block (SYSTEM_CHANNEL_SYSTEM_INFO_BLOCK)	19
Table 14: System Channel - Channel Info Block (SYSTEM_CHANNEL_CHANNEL_INFO_BLOCK)	20
Table 15: System channel control block (SYSTEM_CHANNEL_SYSTEM_CONTROL_BLOCK)	20
Table 16: System channel status block (SYSTEM_CHANNEL_SYSTEM_STATUS_BLOCK)	20
Table 17: Channel information structure	21
Table 18: xDriverOpen arguments	22
Table 19: xDriverClose arguments.....	23
Table 20: xDriverGetInformation arguments	24
Table 21: xDriverGetErrorDescription arguments	25
Table 22: xDriverEnumBoards arguments	26
Table 23: xDriverEnumChannels arguments.....	27
Table 24: xDriverRestartDevice arguments.....	28
Table 25: xDriverMemoryPointer arguments.....	29
Table 26: Memory information (MEMORY_INFORMATION structure)	29
Table 27: xSysdeviceOpen arguments	31
Table 28: xSysdeviceClose arguments	32
Table 29: xSysdeviceInfo arguments	33
Table 30: xSysdeviceReset arguments.....	34
Table 31: xSysdeviceResetEx arguments.....	35
Table 32: xSysdeviceResetEx: Argument ulMode (netX 90/4000/4100).....	36
Table 33: xSysdeviceResetEx: Argument ulMode (netX 10/50/51/52/100/500)	36
Table 34: xSysdeviceBootstart arguments.....	37
Table 35: xSysdeviceGetMBXState arguments	38
Table 36: xSysdevicePutPacket arguments.....	39
Table 37: xSysdeviceGetPacket arguments.....	40
Table 38: Download modes.....	41
Table 39: xSysdeviceDownload arguments	42
Table 40: xSysdeviceFindFirstFile arguments.....	43
Table 41: xSysdeviceFindNextFile arguments	44
Table 42: xSysdeviceUpload arguments.....	45
Table 43: xSysdeviceExtendedMemory arguments	46
Table 44: ulMemoryInformation.....	47
Table 45: xChannelOpen arguments	50
Table 46: xChannelClose arguments	51
Table 47: xChannelDownload arguments	52
Table 48: xChannelFindFirstFile arguments.....	53
Table 49: xChannelFindNextFile arguments	54
Table 50: xChannelUpload arguments.....	55
Table 51: xChannelGetMBXState arguments	56
Table 52: xChannelPutPacket arguments.....	57
Table 53: xChannelGetPacket arguments.....	58
Table 54: xChannelGetSendPacket arguments	59
Table 55: xChannelReset arguments.....	60
Table 56: xChannelInfo arguments	61
Table 57: xChannelIOInfo arguments	62
Table 58: xChannelWatchdog arguments	63
Table 59: xChannelConfigLock arguments	64
Table 60: xChannelHostState arguments.....	65
Table 61: xChannelBusState arguments.....	66
Table 62: xChannelControlBlock arguments.....	67
Table 63: xChannelCommonStatusBlock arguments.....	68

Table 64: xChannelExtendedStatusBlock arguments	69
Table 65: xChannelIORead arguments.....	71
Table 66: xChannelIOWrite arguments	72
Table 67: xChannelIOReadSendData arguments	73
Table 68: xChannelPLCMemoryPtr arguments.....	75
Table 69: xChannelPLCActivateRead arguments	79
Table 70: xChannelPLCActivateWrite arguments	80
Table 71: xChannelPLCIsReadReady arguments.....	81
Table 72: xChannelPLCIsWriteReady arguments.....	82
Table 73: xChannelDMAState arguments	83
Table 74: Notification functions	84
Table 75: I/O Exchange modes.....	85
Table 76: Data Exchange Mode: Buffered Host Controlled I/O (steps)	86
Table 77: Data Exchange Mode: Buffered Device Controlled I/O (steps).....	87
Table 78: Bus synchronization notifications (steps)	89
Table 79: PFN_NOTIFY_CALLBACK arguments	90
Table 80: Notification events.....	90
Table 81: xChannelRegisterNotification arguments	91
Table 82: xChannelUnregisterNotification arguments	92
Table 83: xChannelSyncState arguments	95
Table 84: General Error Codes (0x800Axxxx).....	111
Table 85: Driver-related error codes (0x800Bxxxx).....	112
Table 86: Device / Communication-related error codes (0x800Cxxxx)	115

8.2 List of figures

Figure 1: CIFS API components.....	6
Figure 2: Component Overview for netX applications	7
Figure 3: General dual-port memory layout.....	12
Figure 4: Data Exchange Mode: Buffered Host Controlled I/O.....	86
Figure 5: Data Exchange Mode: Buffered Device Controlled I/O	87
Figure 6: Bus synchronization notifications	89

8.3 Legal notes

Copyright

© Hilscher Gesellschaft für Systemautomation mbH

All rights reserved.

The images, photographs and texts in the accompanying materials (in the form of a user's manual, operator's manual, Statement of Work document and all other document types, support texts, documentation, etc.) are protected by German and international copyright and by international trade and protective provisions. Without the prior written consent, you do not have permission to duplicate them either in full or in part using technical or mechanical methods (print, photocopy or any other method), to edit them using electronic systems or to transfer them. You are not permitted to make changes to copyright notices, markings, trademarks or ownership declarations. Illustrations are provided without taking the patent situation into account. Any company names and product designations provided in this document may be brands or trademarks by the corresponding owner and may be protected under trademark, brand or patent law. Any form of further use shall require the express consent from the relevant owner of the rights.

Important notes

Utmost care was/is given in the preparation of the documentation at hand consisting of a user's manual, operating manual and any other document type and accompanying texts. However, errors cannot be ruled out. Therefore, we cannot assume any guarantee or legal responsibility for erroneous information or liability of any kind. You are hereby made aware that descriptions found in the user's manual, the accompanying texts and the documentation neither represent a guarantee nor any indication on proper use as stipulated in the agreement or a promised attribute. It cannot be ruled out that the user's manual, the accompanying texts and the documentation do not completely match the described attributes, standards or any other data for the delivered product. A warranty or guarantee with respect to the correctness or accuracy of the information is not assumed.

We reserve the right to modify our products and the specifications for such as well as the corresponding documentation in the form of a user's manual, operating manual and/or any other document types and accompanying texts at any time and without notice without being required to notify of said modification. Changes shall be taken into account in future manuals and do not represent an obligation of any kind, in particular there shall be no right to have delivered documents revised. The manual delivered with the product shall apply.

Under no circumstances shall Hilscher Gesellschaft für Systemautomation mbH be liable for direct, indirect, ancillary or subsequent damage, or for any loss of income, which may arise after use of the information contained herein.

Liability disclaimer

The hardware and/or software was created and tested by Hilscher Gesellschaft für Systemautomation mbH with utmost care and is made available as is. No warranty can be assumed for the performance or flawlessness of the hardware and/or software under all application conditions and scenarios and the work results achieved by the user when using the hardware and/or software. Liability for any damage that may have occurred as a result of using the hardware and/or software or the corresponding documents shall be limited to an event involving willful intent or a grossly negligent violation of a fundamental contractual obligation. However, the right to assert damages due to a violation of a fundamental contractual obligation shall be limited to contract-typical foreseeable damage.

It is hereby expressly agreed upon in particular that any use or utilization of the hardware and/or software in connection with

- Flight control systems in aviation and aerospace;
- Nuclear fission processes in nuclear power plants;
- Medical devices used for life support and
- Vehicle control systems used in passenger transport

shall be excluded. Use of the hardware and/or software in any of the following areas is strictly prohibited:

- For military purposes or in weaponry;
- For designing, engineering, maintaining or operating nuclear systems;
- In flight safety systems, aviation and flight telecommunications systems;
- In life-support systems;
- In systems in which any malfunction in the hardware and/or software may result in physical injuries or fatalities.

You are hereby made aware that the hardware and/or software was not created for use in hazardous environments, which require fail-safe control mechanisms. Use of the hardware and/or software in this kind of environment shall be at your own risk; any liability for damage or loss due to impermissible use shall be excluded.

Warranty

Hilscher Gesellschaft für Systemautomation mbH hereby guarantees that the software shall run without errors in accordance with the requirements listed in the specifications and that there were no defects on the date of acceptance. The warranty period shall be 12 months commencing as of the date of acceptance or purchase (with express declaration or implied, by customer's conclusive behavior, e.g. putting into operation permanently).

The warranty obligation for equipment (hardware) we produce is 36 months, calculated as of the date of delivery ex works. The aforementioned provisions shall not apply if longer warranty periods are mandatory by law pursuant to Section 438 (1.2) BGB, Section 479 (1) BGB and Section 634a (1) BGB [Bürgerliches Gesetzbuch; German Civil Code] If, despite of all due care taken, the delivered product should have a defect, which already existed at the time of the transfer of risk, it shall be at our discretion to either repair the product or to deliver a replacement product, subject to timely notification of defect.

The warranty obligation shall not apply if the notification of defect is not asserted promptly, if the purchaser or third party has tampered with the products, if the defect is the result of natural wear, was caused by unfavorable operating conditions or is due to violations against our operating regulations or against rules of good electrical engineering practice, or if our request to return the defective object is not promptly complied with.

Costs of support, maintenance, customization and product care

Please be advised that any subsequent improvement shall only be free of charge if a defect is found. Any form of technical support, maintenance and customization is not a warranty service, but instead shall be charged extra.

Additional guarantees

Although the hardware and software was developed and tested in-depth with greatest care, Hilscher Gesellschaft für Systemautomation mbH shall not assume any guarantee for the suitability thereof for any purpose that was not confirmed in writing. No guarantee can be granted whereby the hardware and software satisfies your requirements, or the use of the hardware and/or software is uninterrupted or the hardware and/or software is fault-free.

It cannot be guaranteed that patents and/or ownership privileges have not been infringed upon or violated or that the products are free from third-party influence. No additional guarantees or promises shall be made as to whether the product is market current, free from deficiency in title, or can be integrated or is usable for specific purposes, unless such guarantees or promises are required under existing law and cannot be restricted.

Confidentiality

The customer hereby expressly acknowledges that this document contains trade secrets, information protected by copyright and other patent and ownership privileges as well as any related rights of Hilscher Gesellschaft für Systemautomation mbH. The customer agrees to treat as confidential all of the information made available to customer by Hilscher Gesellschaft für Systemautomation mbH and rights, which were disclosed by Hilscher Gesellschaft für Systemautomation mbH and that were made accessible as well as the terms and conditions of this agreement itself.

The parties hereby agree to one another that the information that each party receives from the other party respectively is and shall remain the intellectual property of said other party, unless provided for otherwise in a contractual agreement.

The customer must not allow any third party to become knowledgeable of this expertise and shall only provide knowledge thereof to authorized users as appropriate and necessary. Companies associated with the customer shall not be deemed third parties. The customer must obligate authorized users to confidentiality. The customer should only use the confidential information in connection with the performances specified in this agreement.

The customer must not use this confidential information to his own advantage or for his own purposes or rather to the advantage or for the purpose of a third party, nor must it be used for commercial purposes and this confidential information must only be used to the extent provided for in this agreement or otherwise to the extent as expressly authorized by the disclosing party in written form. The customer has the right, subject to the obligation to confidentiality, to disclose the terms and conditions of this agreement directly to his legal and financial consultants as would be required for the customer's normal business operation.

Export provisions

The delivered product (including technical data) is subject to the legal export and/or import laws as well as any associated regulations of various countries, especially such laws applicable in Germany and in the United States. The products / hardware / software must not be exported into such countries for which export is prohibited under US American export control laws and its supplementary provisions. You hereby agree to strictly follow the regulations and to yourself be responsible for observing them. You are hereby made aware that you may be required to obtain governmental approval to export, reexport or import the product.

8.4 Contacts

Headquarters

Germany

Hilscher Gesellschaft für
Systemautomation mbH
Rheinstrasse 15
65795 Hattersheim
Phone: +49 (0) 6190 9907-0
Fax: +49 (0) 6190 9907-50
E-Mail: info@hilscher.com

Support

Phone: +49 (0) 6190 9907-99
E-Mail: de.support@hilscher.com

Subsidiaries

China

Hilscher Systemautomation (Shanghai) Co. Ltd.
200010 Shanghai
Phone: +86 (0) 21-6355-5161
E-Mail: info@hilscher.cn

Support

Phone: +86 (0) 21-6355-5161
E-Mail: cn.support@hilscher.com

France

Hilscher France S.a.r.l.
69500 Bron
Phone: +33 (0) 4 72 37 98 40
E-Mail: info@hilscher.fr

Support

Phone: +33 (0) 4 72 37 98 40
E-Mail: fr.support@hilscher.com

India

Hilscher India Pvt. Ltd.
Pune, Delhi, Mumbai
Phone: +91 8888 750 777
E-Mail: info@hilscher.in

Italy

Hilscher Italia S.r.l.
20090 Vimodrone (MI)
Phone: +39 02 25007068
E-Mail: info@hilscher.it

Support

Phone: +39 02 25007068
E-Mail: it.support@hilscher.com

Japan

Hilscher Japan KK
Tokyo, 160-0022
Phone: +81 (0) 3-5362-0521
E-Mail: info@hilscher.jp

Support

Phone: +81 (0) 3-5362-0521
E-Mail: jp.support@hilscher.com

Korea

Hilscher Korea Inc.
Seongnam, Gyeonggi, 463-400
Phone: +82 (0) 31-789-3715
E-Mail: info@hilscher.kr

Switzerland

Hilscher Swiss GmbH
4500 Solothurn
Phone: +41 (0) 32 623 6633
E-Mail: info@hilscher.ch

Support

Phone: +49 (0) 6190 9907-99
E-Mail: ch.support@hilscher.com

USA

Hilscher North America, Inc.
Lisle, IL 60532
Phone: +1 630-505-5301
E-Mail: info@hilscher.us

Support

Phone: +1 630-505-5301
E-Mail: us.support@hilscher.com